

Product datasheet for **TA343204**

DHRS4 Rabbit Polyclonal Antibody

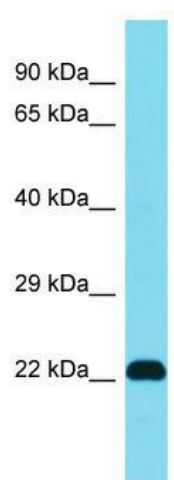
Product data:

Product Type:	Primary Antibodies
Applications:	WB
Recommended Dilution:	WB
Reactivity:	Mouse
Host:	Rabbit
Isotype:	IgG
Clonality:	Polyclonal
Immunogen:	The immunogen for anti-Dhrs4 antibody is: synthetic peptide directed towards the middle region of Mouse Dhhrs4. Synthetic peptide located within the following region: RRLAEDGAHVWVSSRKQNVDRVATLQGEGLSVTGIVCHVGKAEDREKL
Formulation:	Liquid. Purified antibody supplied in 1x PBS buffer with 0.09% (w/v) sodium azide and 2% sucrose. <i>Note that this product is shipped as lyophilized powder to China customers.</i>
Conjugation:	Unconjugated
Storage:	Store at -20°C as received.
Stability:	Stable for 12 months from date of receipt.
Predicted Protein Size:	23 kDa
Gene Name:	dehydrogenase/reductase 4
Database Link:	NP_066284 Entrez Gene 28200 Mouse Q9BTZ2
Background:	The function of this protein remaining unknown.
Synonyms:	CR; NRDR; PHCR; PSCD; SCAD-SRL; SDR-SRL; SDR25C1; SDR25C2
Note:	Immunogen Sequence Homology: Horse: 100%; Human: 100%; Rat: 93%; Mouse: 93%; Bovine: 93%; Rabbit: 92%; Pig: 86%; Guinea pig: 86%; Dog: 85%; Goat: 83%
Protein Families:	Druggable Genome
Protein Pathways:	Metabolic pathways, Retinol metabolism



[View online »](#)

Product images:



Host: Rabbit; Target Name: Dhhrs4; Sample
Tissue: Mouse Heart lysates; Antibody Dilution:
1.0 ug/ml