

Product datasheet for **TA343203**

CNTROB Rabbit Polyclonal Antibody

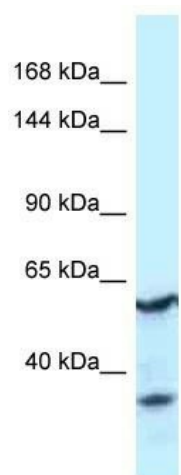
Product data:

Product Type:	Primary Antibodies
Applications:	WB
Recommended Dilution:	WB
Reactivity:	Human
Host:	Rabbit
Isotype:	IgG
Clonality:	Polyclonal
Immunogen:	The immunogen for anti-CNTROB antibody is: synthetic peptide directed towards the middle region of Human CNTROB. Synthetic peptide located within the following region: SQAQLEREKEKSQREAQAAWETQHQLALVQSEVRRLEGELDTARRERDAL
Formulation:	Liquid. Purified antibody supplied in 1x PBS buffer with 0.09% (w/v) sodium azide and 2% sucrose. <i>Note that this product is shipped as lyophilized powder to China customers.</i>
Purification:	Affinity Purified
Conjugation:	Unconjugated
Storage:	Store at -20°C as received.
Stability:	Stable for 12 months from date of receipt.
Predicted Protein Size:	60 kDa
Gene Name:	centrobin, centriole duplication and spindle assembly protein
Database Link:	NP_444279 Entrez Gene 116840 Human Q8N137
Background:	This gene encodes a centrosomal protein that interacts with BRCA2, and is required for centriole duplication and cytokinesis. Alternatively spliced transcript variants encoding different isoforms have been described for this gene.
Synonyms:	LIP8; PP1221
Note:	Immunogen Sequence Homology: Human: 100%; Pig: 86%; Rat: 86%; Mouse: 86%; Rabbit: 86%; Guinea pig: 86%; Dog: 79%; Horse: 79%



[View online »](#)

Product images:



Host: Rabbit; Target Name: CNTROB; Sample
Tissue: Fetal Kidney lysates; Antibody Dilution: 1.0
ug/ml