

## Product datasheet for **TA343202**

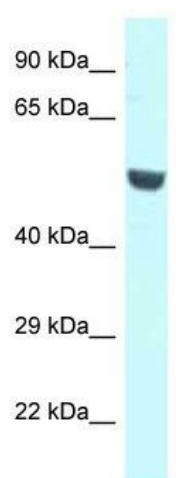
### CNKSR1 Rabbit Polyclonal Antibody

#### Product data:

Product Type:	Primary Antibodies
Applications:	WB
Recommended Dilution:	WB
Reactivity:	Human
Host:	Rabbit
Isotype:	IgG
Clonality:	Polyclonal
Immunogen:	The immunogen for anti-CNKSR1 antibody is: synthetic peptide directed towards the middle region of Human CNKSR1. Synthetic peptide located within the following region: VLKGHTLYWYRQPQDEKA EGLINVS NYSLESGHDQKKKYVFQLTHDVYKP
Formulation:	Liquid. Purified antibody supplied in 1x PBS buffer with 0.09% (w/v) sodium azide and 2% sucrose. <i>Note that this product is shipped as lyophilized powder to China customers.</i>
Purification:	Affinity Purified
Conjugation:	Unconjugated
Storage:	Store at -20°C as received.
Stability:	Stable for 12 months from date of receipt.
Predicted Protein Size:	50 kDa
Gene Name:	connector enhancer of kinase suppressor of Ras 1
Database Link:	<a href="#">NP_006305</a> <a href="#">Entrez Gene 10256 Human Q969H4</a>
Background:	The function of this protein remains unknown.
Synonyms:	CNK; CNK1
Note:	Immunogen Sequence Homology: Pig: 100%; Rat: 100%; Horse: 100%; Human: 100%; Mouse: 100%; Bovine: 100%; Dog: 93%; Rabbit: 93%; Guinea pig: 93%
Protein Families:	Druggable Genome



[View online »](#)

**Product images:**

Host: Rabbit; Target Name: CNKSR1; Sample  
Tissue: A549 Whole Cell lysates; Antibody  
Dilution: 1.0 ug/ml