

Product datasheet for **TA343200**

CTNNBL1 Rabbit Polyclonal Antibody

Product data:

Product Type:	Primary Antibodies
Applications:	WB
Recommended Dilution:	WB
Reactivity:	Human
Host:	Rabbit
Isotype:	IgG
Clonality:	Polyclonal
Immunogen:	The immunogen for anti-CTNNBL1 antibody is: synthetic peptide directed towards the C-terminal region of Human CTNNBL1. Synthetic peptide located within the following region: AMIGPEGTDNCHKFVDILGLRTIFPLFMKSPRKIKKVGTTTEKEHEEHVCS
Formulation:	Liquid. Purified antibody supplied in 1x PBS buffer with 0.09% (w/v) sodium azide and 2% sucrose. <i>Note that this product is shipped as lyophilized powder to China customers.</i>
Purification:	Affinity Purified
Conjugation:	Unconjugated
Storage:	Store at -20°C as received.
Stability:	Stable for 12 months from date of receipt.
Predicted Protein Size:	34 kDa
Gene Name:	catenin beta like 1
Database Link:	NP_110517 Entrez Gene 56259 Human Q8WYA6
Background:	The protein encoded by this gene contains an acidic domain, a putative bipartite nuclear localization signal, a nuclear export signal, a leucine-isoleucine zipper, and phosphorylation motifs. In addition, the encoded protein contains Armadillo/beta-catenin-like repeats, which have been implicated in protein-protein interactions. Although the function of this protein has not been determined, the C-terminal portion of the protein has been shown to possess apoptosis-inducing activity.



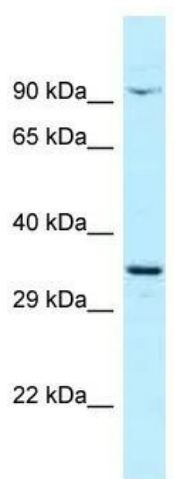
[View online »](#)

Synonyms: C20orf33; dj633O20.1; NAP; P14L; PP8304

Note: Immunogen Sequence Homology: Dog: 100%; Pig: 100%; Rat: 100%; Horse: 100%; Human: 100%; Mouse: 100%; Bovine: 100%; Guinea pig: 100%; Rabbit: 93%

Protein Pathways: Spliceosome

Product images:



Host: Rabbit; Target Name: CTNNBL1; Sample Tissue: OVCAR-3 Whole Cell lysates; Antibody Dilution: 1.0 ug/ml CTNNBL1 is supported by BioGPS gene expression data to be expressed in OVCAR3