

## Product datasheet for **TA343199**

### SPECC1 Rabbit Polyclonal Antibody

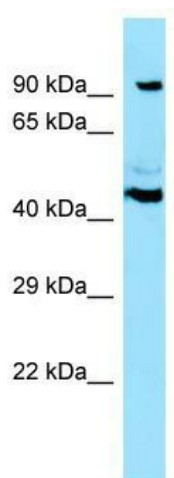
#### Product data:

Product Type:	Primary Antibodies
Applications:	WB
Recommended Dilution:	WB
Reactivity:	Human
Host:	Rabbit
Isotype:	IgG
Clonality:	Polyclonal
Immunogen:	The immunogen for anti-SPECC1 antibody is: synthetic peptide directed towards the N-terminal region of Human SPECC1. Synthetic peptide located within the following region: RTPSTKPKQENEGGEKAALESQVRELLAEAKAKDSEINRLRSELKKYKEK
Formulation:	Liquid. Purified antibody supplied in 1x PBS buffer with 0.09% (w/v) sodium azide and 2% sucrose.
Conjugation:	Unconjugated
Storage:	Store at -20°C as received.
Stability:	Stable for 12 months from date of receipt.
Predicted Protein Size:	87 kDa
Gene Name:	sperm antigen with calponin homology and coiled-coil domains 1
Database Link:	<a href="#">NP_690868</a> <a href="#">Entrez Gene 92521 Human</a> <a href="#">Q5M775</a>
Background:	The protein encoded by this gene belongs to the cytospin-A family. It is localized in the nucleus, and highly expressed in testis and some cancer cell lines. A chromosomal translocation involving this gene and platelet-derived growth factor receptor, beta gene (PDGFRB) may be a cause of juvenile myelomonocytic leukemia. Alternatively spliced transcript variants encoding different isoforms have been described for this gene.
Synonyms:	CYTSB; HCMOGT-1; HCMOGT1; NSP
Note:	Immunogen Sequence Homology: Human: 100%; Rabbit: 87%; Dog: 79%; Rat: 79%; Horse: 79%



[View online »](#)

## Product images:



WB Suggested Anti-SPECC1 Antibody; Titration:  
1.0 ug/ml; Positive Control: HepG2 Whole Cell