

Product datasheet for **TA343195**

ATPAF2 Rabbit Polyclonal Antibody

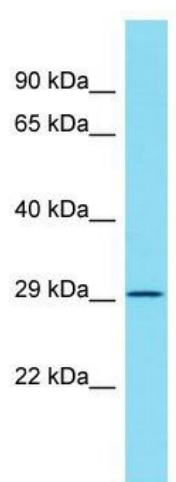
Product data:

Product Type:	Primary Antibodies
Applications:	WB
Recommended Dilution:	WB
Reactivity:	Rat
Host:	Rabbit
Isotype:	IgG
Clonality:	Polyclonal
Immunogen:	The immunogen for anti-Atpaf2 antibody is: synthetic peptide directed towards the middle region of Rat Atpaf2. Synthetic peptide located within the following region: TEWDSQQDTIKFYTMHLTTLCNTSLDNPTQRNKDQLIRAAVKFLDTDITC
Formulation:	Liquid. Purified antibody supplied in 1x PBS buffer with 0.09% (w/v) sodium azide and 2% sucrose.
Conjugation:	Unconjugated
Storage:	Store at -20°C as received.
Stability:	Stable for 12 months from date of receipt.
Predicted Protein Size:	32 kDa
Gene Name:	ATP synthase mitochondrial F1 complex assembly factor 2
Database Link:	NP_663729 Entrez Gene 303190 Rat Q8N5M1
Background:	The function of this protein remains unknown.
Synonyms:	ATP12; ATP12p; LP3663; MC5DN1
Note:	Immunogen Sequence Homology: Dog: 100%; Rat: 100%; Horse: 100%; Human: 100%; Pig: 93%; Mouse: 93%; Bovine: 93%; Rabbit: 93%; Guinea pig: 93%; Zebrafish: 79%



[View online »](#)

Product images:



Host: Rabbit; Target Name: Atpaf2; Sample
Tissue: Rat Lung lysates; Antibody Dilution: 1.0
ug/ml