

## Product datasheet for **TA343193**

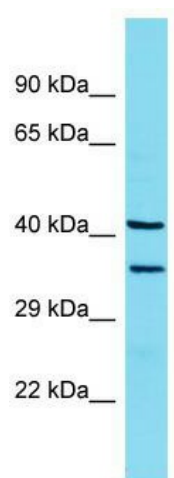
### LMAN2 Rabbit Polyclonal Antibody

#### Product data:

Product Type:	Primary Antibodies
Applications:	WB
Recommended Dilution:	WB
Reactivity:	Rat
Host:	Rabbit
Isotype:	IgG
Clonality:	Polyclonal
Immunogen:	The immunogen for anti-Lman2 antibody is: synthetic peptide directed towards the N-terminal region of Rat Lman2. Synthetic peptide located within the following region: QGVGSSMPLWDFQGSTMLTSQYVRLTPDERSKEGSIWNHQPCLKDWEM
Formulation:	Liquid. Purified antibody supplied in 1x PBS buffer with 0.09% (w/v) sodium azide and 2% sucrose. <i>Note that this product is shipped as lyophilized powder to China customers.</i>
Conjugation:	Unconjugated
Storage:	Store at -20°C as received.
Stability:	Stable for 12 months from date of receipt.
Predicted Protein Size:	39 kDa
Gene Name:	lectin, mannose binding 2
Database Link:	<a href="#">NP_006807</a> <a href="#">Entrez Gene 290994 Rat</a> <a href="#">Q12907</a>
Background:	The function of this protein remains unknown.
Synonyms:	C5orf8; GP36B; VIP36
Note:	Immunogen Sequence Homology: Dog: 100%; Pig: 100%; Rat: 100%; Horse: 100%; Human: 100%; Mouse: 100%; Bovine: 100%; Rabbit: 100%; Guinea pig: 100%; Zebrafish: 93%
Protein Families:	Transmembrane



[View online »](#)

**Product images:**

Host: Rabbit; Target Name: Lman2; Sample  
Tissue: Rat Lung lysates; Antibody Dilution: 1.0  
ug/ml