

Product datasheet for **TA343192**

VPS33A Rabbit Polyclonal Antibody

Product data:

Product Type:	Primary Antibodies
Applications:	WB
Recommended Dilution:	WB
Reactivity:	Human
Host:	Rabbit
Isotype:	IgG
Clonality:	Polyclonal
Immunogen:	The immunogen for anti-VPS33A antibody is: synthetic peptide directed towards the middle region of Human VPS33A. Synthetic peptide located within the following region: TYEGLIDEIYGIQNSYVKLPPEKFAPKKQGDGGKDLPTAKKLQLNSAE
Formulation:	Liquid. Purified antibody supplied in 1x PBS buffer with 0.09% (w/v) sodium azide and 2% sucrose. <i>Note that this product is shipped as lyophilized powder to China customers.</i>
Purification:	Affinity Purified
Conjugation:	Unconjugated
Storage:	Store at -20°C as received.
Stability:	Stable for 12 months from date of receipt.
Predicted Protein Size:	67 kDa
Gene Name:	VPS33A, CORVET/HOPS core subunit
Database Link:	NP_075067 Entrez Gene 65082 Human Q96AX1



[View online »](#)

Background:

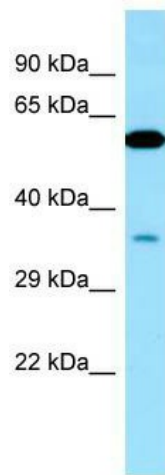
Vesicle mediated protein sorting plays an important role in segregation of intracellular molecules into distinct organelles. Genetic studies in yeast have identified more than 40 vacuolar protein sorting (VPS) genes involved in vesicle transport to vacuoles. This gene is a member of the Sec-1 domain family, and it encodes a protein similar to the yeast class C Vps33 protein. The mammalian class C VPS proteins are predominantly associated with late endosomes/lysosomes, and like their yeast counterparts, may mediate vesicle trafficking steps in the endosome/lysosome pathway.

Synonyms:

FLJ22395; FLJ23187

Note:

Immunogen Sequence Homology: Dog: 100%; Horse: 100%; Human: 100%; Bovine: 100%; Pig: 93%; Rat: 93%; Rabbit: 93%; Guinea pig: 93%; Zebrafish: 86%; Mouse: 81%

Product images:

Host: Rabbit; Target Name: VPS33A; Sample Tissue: 721_B whole cell lysates; Antibody Dilution: 1.0 ug/ml