

Product datasheet for **TA343191**

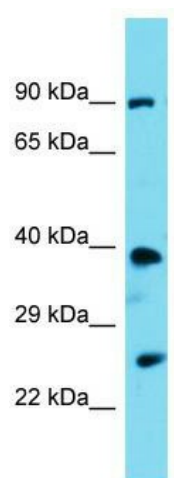
PSTPIP2 Rabbit Polyclonal Antibody

Product data:

Product Type:	Primary Antibodies
Applications:	WB
Recommended Dilution:	WB
Reactivity:	Mouse
Host:	Rabbit
Isotype:	IgG
Clonality:	Polyclonal
Immunogen:	The immunogen for anti-Pstpip2 antibody is: synthetic peptide directed towards the N-terminal region of Mouse Pstpip2. Synthetic peptide located within the following region: SIIQHLNNGRKNCKEFEDFLKERASIEEKYGKDLLNLSRKKPCGQSEINT
Formulation:	Liquid. Purified antibody supplied in 1x PBS buffer with 0.09% (w/v) sodium azide and 2% sucrose. <i>Note that this product is shipped as lyophilized powder to China customers.</i>
Conjugation:	Unconjugated
Storage:	Store at -20°C as received.
Stability:	Stable for 12 months from date of receipt.
Predicted Protein Size:	39 kDa
Gene Name:	proline-serine-threonine phosphatase interacting protein 2
Database Link:	NP_077748 Entrez Gene 19201 Mouse Q9H939
Background:	Pstpip2 binds to F-actin. It may be involved in regulation of the actin cytoskeleton.
Synonyms:	MAYP
Note:	Immunogen Sequence Homology: Dog: 100%; Pig: 100%; Rat: 100%; Horse: 100%; Human: 100%; Mouse: 100%; Rabbit: 100%; Guinea pig: 93%; Bovine: 85%
Protein Families:	Druggable Genome



[View online »](#)

Product images:

Host: Rabbit; Target Name: Pstpip2; Sample
Tissue: Mouse Kidney lysates; Antibody Dilution:
1.0 ug/ml