

## Product datasheet for **TA343190**

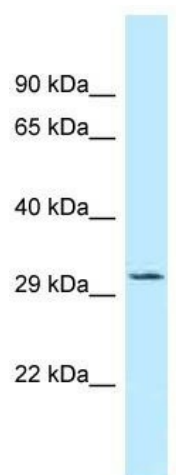
### TIPRL Rabbit Polyclonal Antibody

#### Product data:

Product Type:	Primary Antibodies
Applications:	WB
Recommended Dilution:	WB
Reactivity:	Human
Host:	Rabbit
Isotype:	IgG
Clonality:	Polyclonal
Immunogen:	The immunogen for anti-TIPRL antibody is: synthetic peptide directed towards the C-terminal region of Human TIPRL. Synthetic peptide located within the following region: SLMHVPPSLFTEPNEISQYLPIKEAVCEKLIFPERIDPNPADSQKSTQVE
Formulation:	Liquid. Purified antibody supplied in 1x PBS buffer with 0.09% (w/v) sodium azide and 2% sucrose. <i>Note that this product is shipped as lyophilized powder to China customers.</i>
Purification:	Affinity Purified
Conjugation:	Unconjugated
Storage:	Store at -20°C as received.
Stability:	Stable for 12 months from date of receipt.
Predicted Protein Size:	29 kDa
Gene Name:	TOR signaling pathway regulator
Database Link:	<a href="#">NP_690866</a> <a href="#">Entrez Gene 261726 Human</a> <a href="#">O75663</a>
Background:	TIPRL is an inhibitory regulator of protein phosphatase-2A (PP2A), PP4, and PP6.
Synonyms:	TIP; TIP41
Note:	Immunogen Sequence Homology: Human: 100%; Dog: 79%



[View online »](#)

**Product images:**

Host: Rabbit; Target Name: TIPRL; Sample Tissue: THP-1 Whole Cell lysates; Antibody Dilution: 1.0 ug/ml