

Product datasheet for **TA343189**

POLR2A Rabbit Polyclonal Antibody

Product data:

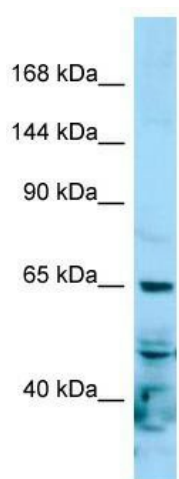
Product Type:	Primary Antibodies
Applications:	WB
Recommended Dilution:	WB
Reactivity:	Human
Host:	Rabbit
Isotype:	IgG
Clonality:	Polyclonal
Immunogen:	The immunogen for anti-POLR2A antibody is: synthetic peptide directed towards the N-terminal region of Human POLR2A. Synthetic peptide located within the following region: DNKFGVEQPEGDEDLTKEKGHGGCGRYQPRIRRSGLELYAEWKHVNEDSQ
Formulation:	Liquid. Purified antibody supplied in 1x PBS buffer with 0.09% (w/v) sodium azide and 2% sucrose. <i>Note that this product is shipped as lyophilized powder to China customers.</i>
Purification:	Affinity Purified
Conjugation:	Unconjugated
Storage:	Store at -20°C as received.
Stability:	Stable for 12 months from date of receipt.
Predicted Protein Size:	62 kDa
Gene Name:	polymerase (RNA) II subunit A
Database Link:	NP_000928 Entrez Gene 5430 Human P24928
Background:	The function of this protein remains unknown.
Synonyms:	hRPB220; hsRPB1; POLR2; POLRA; RPB1; RPBh1; RpIILS; RPO2; RPOL2
Note:	Immunogen Sequence Homology: Dog: 100%; Pig: 100%; Rat: 100%; Horse: 100%; Human: 100%; Mouse: 100%; Bovine: 100%; Rabbit: 100%; Guinea pig: 100%; Zebrafish: 79%



[View online »](#)

Protein Pathways: Huntington's disease, Metabolic pathways, Purine metabolism, Pyrimidine metabolism, RNA polymerase

Product images:



Host: Rabbit; Target Name: POLR2A; Sample Tissue: HeLa whole cell lysates; Antibody Dilution: 1.0 ug/ml