

Product datasheet for **TA343188**

CMG1 (IFT74) Rabbit Polyclonal Antibody

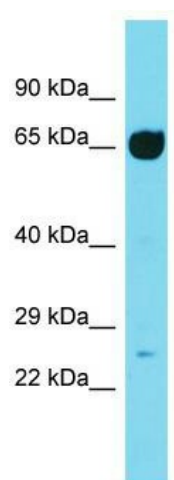
Product data:

Product Type:	Primary Antibodies
Applications:	WB
Recommended Dilution:	WB
Reactivity:	Rat
Host:	Rabbit
Isotype:	IgG
Clonality:	Polyclonal
Immunogen:	The immunogen for anti-Ift74 antibody is: synthetic peptide directed towards the middle region of RAT Ift74. Synthetic peptide located within the following region: NMSPEKQVKYIEMKTTNEKLLQELDTLQQQLDSLNIKKESLETEIAHSQV
Formulation:	Liquid. Purified antibody supplied in 1x PBS buffer with 0.09% (w/v) sodium azide and 2% sucrose. <i>Note that this product is shipped as lyophilized powder to China customers.</i>
Purification:	Affinity Purified
Conjugation:	Unconjugated
Storage:	Store at -20°C as received.
Stability:	Stable for 12 months from date of receipt.
Predicted Protein Size:	66 kDa
Gene Name:	intraflagellar transport 74
Database Link:	NP_079379 Entrez Gene 313365 Rat Q96LB3
Background:	The function of this protein remains unknown.
Synonyms:	BBS20; CCDC2; CMG-1; CMG1
Note:	Immunogen Sequence Homology: Human: 100%; Dog: 93%; Pig: 93%; Mouse: 93%; Bovine: 93%; Rabbit: 93%; Guinea pig: 93%; Rat: 86%; Horse: 86%; Yeast: 83%



[View online »](#)

Product images:



Host: Rabbit; Target Name: Ift74; Sample Tissue: Rat Lung lysates; Antibody Dilution: 1.0 ug/ml