

## Product datasheet for **TA343187**

### AGAP1 Rabbit Polyclonal Antibody

#### Product data:

Product Type:	Primary Antibodies
Applications:	WB
Recommended Dilution:	WB
Reactivity:	Human
Host:	Rabbit
Isotype:	IgG
Clonality:	Polyclonal
Immunogen:	The immunogen for anti-AGAP1 antibody is: synthetic peptide directed towards the middle region of Human AGAP1. Synthetic peptide located within the following region: NTPTPVRKQSKRRSNLFTSRKGSDDPDKEKKGLESRADSIGSGRAIPIKQG
Formulation:	Liquid. Purified antibody supplied in 1x PBS buffer with 0.09% (w/v) sodium azide and 2% sucrose. <i>Note that this product is shipped as lyophilized powder to China customers.</i>
Purification:	Affinity Purified
Conjugation:	Unconjugated
Storage:	Store at -20°C as received.
Stability:	Stable for 12 months from date of receipt.
Predicted Protein Size:	44 kDa
Gene Name:	ArfGAP with GTPase domain, ankyrin repeat and PH domain 1
Database Link:	<a href="#">NP_001032208</a> <a href="#">Entrez Gene 116987 Human</a> <a href="#">Q9UPQ3</a>
Background:	This gene encodes a member of an ADP-ribosylation factor GTPase-activating protein family involved in membrane trafficking and cytoskeleton dynamics. This gene functions as a direct regulator of the adaptor-related protein complex 3 on endosomes. Multiple transcript variants encoding different isoforms have been found for this gene.
Synonyms:	AGAP-1; CENTG2; cnt-g2; GGAP1

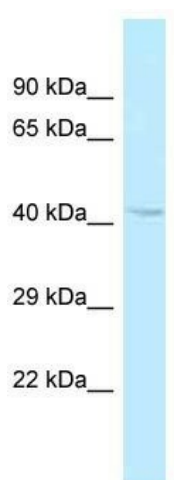


[View online »](#)

**Note:** Immunogen Sequence Homology: Dog: 100%; Pig: 100%; Rat: 100%; Horse: 100%; Human: 100%; Mouse: 100%; Bovine: 100%; Rabbit: 100%; Guinea pig: 100%; Zebrafish: 79%

**Protein Pathways:** Endocytosis

**Product images:**



Host: Rabbit; Target Name: AGAP1; Sample Tissue: NCI-H226 Whole Cell lysates; Antibody Dilution: 1.0 ug/ml