

Product datasheet for **TA343186**

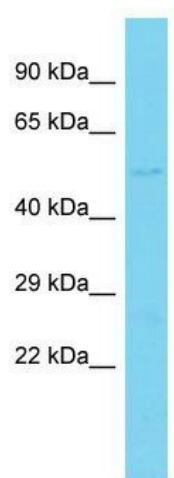
WSB1 Rabbit Polyclonal Antibody

Product data:

Product Type:	Primary Antibodies
Applications:	WB
Recommended Dilution:	WB
Reactivity:	Rat
Host:	Rabbit
Isotype:	IgG
Clonality:	Polyclonal
Immunogen:	The immunogen for anti-Wsb1 antibody is: synthetic peptide directed towards the middle region of Rat Wsb1. Synthetic peptide located within the following region: VPWSQCLKNFLLHGSKNVTNSSCLKLARQNSGGQKNKPREHIIDCGDIV
Formulation:	Liquid. Purified antibody supplied in 1x PBS buffer with 0.09% (w/v) sodium azide and 2% sucrose. <i>Note that this product is shipped as lyophilized powder to China customers.</i>
Conjugation:	Unconjugated
Storage:	Store at -20°C as received.
Stability:	Stable for 12 months from date of receipt.
Predicted Protein Size:	46 kDa
Gene Name:	WD repeat and SOCS box containing 1
Database Link:	NP_056441 Entrez Gene 303336 Rat Q9Y6I7
Background:	The function of this protein remains unknown.
Synonyms:	SWIP1; WSB-1
Note:	Immunogen Sequence Homology: Dog: 100%; Pig: 100%; Rat: 100%; Horse: 100%; Human: 100%; Bovine: 100%; Rabbit: 100%; Guinea pig: 93%; Mouse: 86%
Protein Families:	Druggable Genome



[View online »](#)

Product images:

Host: Rabbit; Target Name: Wsb1; Sample Tissue:
Rat Heart lysates; Antibody Dilution: 1.0 ug/ml