

## Product datasheet for **TA343185**

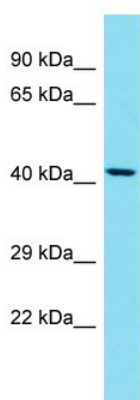
### SDS3 (SUDS3) Rabbit Polyclonal Antibody

#### Product data:

Product Type:	Primary Antibodies
Recommended Dilution:	WB
Reactivity:	Mouse
Host:	Rabbit
Isotype:	IgG
Clonality:	Polyclonal
Immunogen:	The immunogen for anti-Suds3 antibody is: synthetic peptide directed towards the N-terminal region of Mouse Suds3. Synthetic peptide located within the following region: MSAAGLLAPAPAPAAAPAAPEYYPEDEEELESAEDDERSCRGREDEDTE
Formulation:	Liquid. Purified antibody supplied in 1x PBS buffer with 0.09% (w/v) sodium azide and 2% sucrose.
Conjugation:	Unconjugated
Storage:	Store at -20°C as received.
Stability:	Stable for 12 months from date of receipt.
Predicted Protein Size:	38 kDa
Gene Name:	SDS3 homolog, SIN3A corepressor complex component
Database Link:	<a href="#">NP_071936</a> <a href="#">Entrez Gene 71954 Mouse</a> <a href="#">Q9H7L9</a>
Background:	Suds3 is a regulatory protein which represses transcription and augments histone deacetylase activity of HDAC1. It may have a potential role in tumor suppressor pathways and may function in the assembly and/or enzymatic activity of the mSin3A corepressor complex or in mediating interactions between the complex and other regulatory complexes.
Synonyms:	SAP45; SDS3
Note:	Immunogen Sequence Homology: Dog: 100%; Pig: 100%; Rat: 100%; Horse: 100%; Human: 100%; Mouse: 100%; Bovine: 100%; Rabbit: 100%; Guinea pig: 100%
Protein Families:	Transcription Factors


[View online »](#)

## Product images:



Host: Rabbit  
 Target Name: Suds3  
 Sample Type: Mouse Liver lysates  
 Antibody Dilution: 1.0ug/ml