

## Product datasheet for **TA343184**

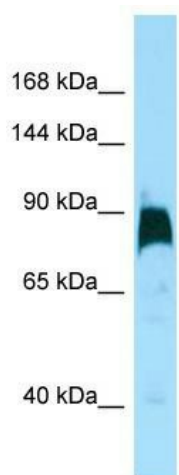
### KIF7 Rabbit Polyclonal Antibody

#### Product data:

Product Type:	Primary Antibodies
Applications:	WB
Recommended Dilution:	WB
Reactivity:	Human
Host:	Rabbit
Isotype:	IgG
Clonality:	Polyclonal
Immunogen:	The immunogen for anti-KIF7 antibody is: synthetic peptide directed towards the C-terminal region of Human KIF7. Synthetic peptide located within the following region: RDLVHAPLPLTWKRSSLCGEEQGSPEELRQREAAEPLVGRVLPVGEAGLP
Formulation:	Liquid. Purified antibody supplied in 1x PBS buffer with 0.09% (w/v) sodium azide and 2% sucrose.
Purification:	Affinity Purified
Conjugation:	Unconjugated
Storage:	Store at -20°C as received.
Stability:	Stable for 12 months from date of receipt.
Predicted Protein Size:	91 kDa
Gene Name:	kinesin family member 7
Database Link:	<a href="#">NP_940927</a> <a href="#">Entrez Gene 374654 Human</a> <a href="#">Q2M1P5</a>
Background:	The function of this protein remains unknown.
Synonyms:	ACLS; AGBK; HLS2; JBTS12; UNQ340
Note:	Immunogen Sequence Homology: Pig: 100%; Human: 100%; Bovine: 92%; Dog: 79%; Rat; Mouse
Protein Families:	Druggable Genome



[View online »](#)

**Product images:**

Host: Rabbit; Target Name: KIF7; Sample Tissue: HT1080 Whole cell lysates; Antibody Dilution: 1.0 ug/ml