

Product datasheet for **TA343183**

RAB31 Rabbit Polyclonal Antibody

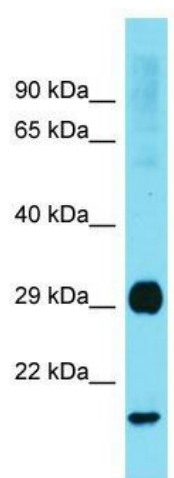
Product data:

Product Type:	Primary Antibodies
Applications:	WB
Recommended Dilution:	WB
Reactivity:	Rat
Host:	Rabbit
Isotype:	IgG
Clonality:	Polyclonal
Immunogen:	The immunogen for anti-Rab31 antibody is: synthetic peptide directed towards the middle region of Rat Rab31. Synthetic peptide located within the following region: GSAAAVIVYDITKQDSFHTLKKWVKELKEHGPENIVMAIAGNKCDLSDIR
Formulation:	Liquid. Purified antibody supplied in 1x PBS buffer with 0.09% (w/v) sodium azide and 2% sucrose. <i>Note that this product is shipped as lyophilized powder to China customers.</i>
Conjugation:	Unconjugated
Storage:	Store at -20°C as received.
Stability:	Stable for 12 months from date of receipt.
Predicted Protein Size:	21 kDa
Gene Name:	RAB31, member RAS oncogene family
Database Link:	NP_006859 Entrez Gene 246324 Rat Q13636
Background:	Rab31 is an oligodendrocyte Rab protein.
Synonyms:	Rab22B
Note:	Immunogen Sequence Homology: Dog: 100%; Pig: 100%; Rat: 100%; Horse: 100%; Human: 100%; Mouse: 100%; Bovine: 100%; Rabbit: 100%; Guinea pig: 100%; Zebrafish: 93%
Protein Families:	Druggable Genome
Protein Pathways:	Endocytosis



[View online »](#)

Product images:



Host: Rabbit; Target Name: Rab31; Sample
Tissue: Rat Brain lysates; Antibody Dilution: 1.0
ug/ml