

## Product datasheet for **TA343182**

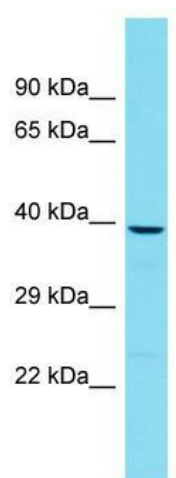
### PTPN7 Rabbit Polyclonal Antibody

#### Product data:

Product Type:	Primary Antibodies
Applications:	WB
Recommended Dilution:	WB
Reactivity:	Rat
Host:	Rabbit
Isotype:	IgG
Clonality:	Polyclonal
Immunogen:	The immunogen for anti-Ptpn7 antibody is: synthetic peptide directed towards the middle region of Rat Ptpn7. Synthetic peptide located within the following region: GMPNTVADFWEMVWQEDVSLIVMLTQLREGKEKCVHYWPTEEEAYGPFQ
Formulation:	Liquid. Purified antibody supplied in 1x PBS buffer with 0.09% (w/v) sodium azide and 2% sucrose. <i>Note that this product is shipped as lyophilized powder to China customers.</i>
Conjugation:	Unconjugated
Storage:	Store at -20°C as received.
Stability:	Stable for 12 months from date of receipt.
Predicted Protein Size:	39 kDa
Gene Name:	protein tyrosine phosphatase, non-receptor type 7
Database Link:	<a href="#">NP_002823</a> <a href="#">Entrez Gene 246781 Rat P35236</a>
Background:	Tyrosine phosphatase found in T cells, B cells and mast cells.
Synonyms:	BPTP-4; HEPTP; LC-PTP; LPTP; PTPNI
Note:	Immunogen Sequence Homology: Dog: 100%; Pig: 100%; Rat: 100%; Human: 100%; Mouse: 100%; Bovine: 100%; Guinea pig: 100%; Rabbit: 93%; Horse: 92%; Zebrafish
Protein Families:	Druggable Genome, Phosphatase
Protein Pathways:	MAPK signaling pathway



[View online »](#)

**Product images:**

Host: Rabbit; Target Name: Ptpn7; Sample Tissue: Rat Lung lysates; Antibody Dilution: 1.0 ug/ml