

Product datasheet for **TA343179**

PGAM1 Rabbit Polyclonal Antibody

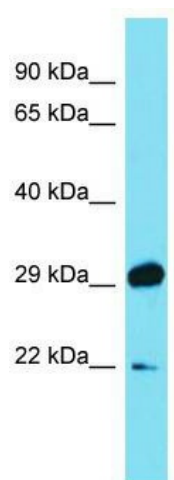
Product data:

Product Type:	Primary Antibodies
Applications:	WB
Recommended Dilution:	WB
Reactivity:	Human
Host:	Rabbit
Isotype:	IgG
Clonality:	Polyclonal
Immunogen:	The immunogen for anti-PGAM1 antibody is: synthetic peptide directed towards the C-terminal region of Human PGAM1. Synthetic peptide located within the following region: EEAIMELNLP TGIPVYELDKNLKPIKPMQFLGDEETVRKAMEAVAAQGK
Formulation:	Liquid. Purified antibody supplied in 1x PBS buffer with 0.09% (w/v) sodium azide and 2% sucrose. <i>Note that this product is shipped as lyophilized powder to China customers.</i>
Conjugation:	Unconjugated
Storage:	Store at -20°C as received.
Stability:	Stable for 12 months from date of receipt.
Predicted Protein Size:	28 kDa
Gene Name:	phosphoglycerate mutase 1
Database Link:	NP_002620 Entrez Gene 5223 Human P18669
Background:	Phosphoglyceric acid mutase (EC 2.7.5.3) is widely distributed in mammalian tissues where it catalyzes the reversible reaction of 3-phosphoglycerate (3-PGA) to 2-phosphoglycerate (2-PGA) in the glycolytic pathway.
Synonyms:	HEL-S-35; PGAM-B; PGAMA
Note:	Immunogen Sequence Homology: Dog: 100%; Pig: 100%; Rat: 100%; Horse: 100%; Human: 100%; Mouse: 100%; Bovine: 100%; Rabbit: 100%; Zebrafish: 100%; Guinea pig: 100%
Protein Pathways:	Glycolysis / Gluconeogenesis, Metabolic pathways



[View online »](#)

Product images:



Host: Rabbit; Target Name: PGAM1; Sample
Tissue: Fetal Brain lysates; Antibody Dilution: 1.0
ug/ml