

## Product datasheet for **TA343177**

### IL17RD Rabbit Polyclonal Antibody

#### Product data:

Product Type:	Primary Antibodies
Applications:	WB
Recommended Dilution:	WB
Reactivity:	Human
Host:	Rabbit
Isotype:	IgG
Clonality:	Polyclonal
Immunogen:	The immunogen for anti-IL17RD antibody is: synthetic peptide directed towards the C-terminal region of Human IL17RD. Synthetic peptide located within the following region: STKYRLMDNLPQLCSHLHSRDHGLQEPGQHTRQGSRNNYFRSKSGRSLYV
Formulation:	Liquid. Purified antibody supplied in 1x PBS buffer with 0.09% (w/v) sodium azide and 2% sucrose. <i>Note that this product is shipped as lyophilized powder to China customers.</i>
Purification:	Affinity Purified
Conjugation:	Unconjugated
Storage:	Store at -20°C as received.
Stability:	Stable for 12 months from date of receipt.
Predicted Protein Size:	65 kDa
Gene Name:	interleukin 17 receptor D
Database Link:	<a href="#">NP_060033</a> <a href="#">Entrez Gene 54756 Human Q8NFM7</a>
Background:	This gene encodes a membrane protein belonging to the interleukin-17 receptor (IL-17R) protein family. The encoded protein is a component of the interleukin-17 receptor signaling complex, and the interaction between this protein and IL-17R does not require the interleukin (PMID: 19079364). The gene product also affects fibroblast growth factor signaling, inhibiting or stimulating growth through MAPK/ERK signaling.
Synonyms:	HH18; IL-17RD; IL17RLM; SEF

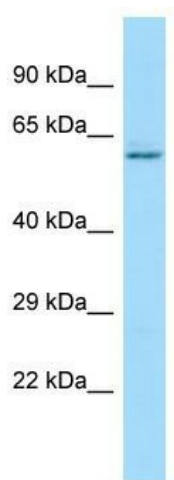


[View online »](#)

**Note:** Immunogen Sequence Homology: Human: 100%; Rat: 79%

**Protein Families:** Druggable Genome

**Product images:**



Host: Rabbit; Target Name: IL17RD; Sample  
Tissue: THP-1 whole cell lysates; Antibody  
Dilution: 1.0 ug/ml