

Product datasheet for **TA343176**

BNIP2 Rabbit Polyclonal Antibody

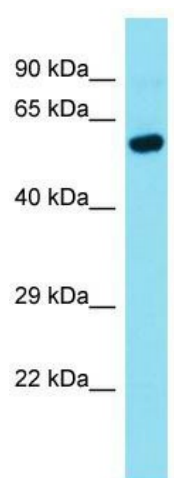
Product data:

Product Type:	Primary Antibodies
Applications:	WB
Recommended Dilution:	WB
Reactivity:	Human
Host:	Rabbit
Isotype:	IgG
Clonality:	Polyclonal
Immunogen:	The immunogen for anti-BNIP2 antibody is: synthetic peptide directed towards the middle region of Human BNIP2. Synthetic peptide located within the following region: AITGPEDQPGSLEVNGNKVRKKLMAPDISLTLDPDGSVLSDDLDESGEI
Formulation:	Liquid. Purified antibody supplied in 1x PBS buffer with 0.09% (w/v) sodium azide and 2% sucrose. <i>Note that this product is shipped as lyophilized powder to China customers.</i>
Conjugation:	Unconjugated
Storage:	Store at -20°C as received.
Stability:	Stable for 12 months from date of receipt.
Predicted Protein Size:	48 kDa
Gene Name:	BCL2/adenovirus E1B 19kDa interacting protein 2
Database Link:	NP_004321 Entrez Gene 663 Human Q12982
Background:	This gene is a member of the BCL2/adenovirus E1B 19 kd-interacting protein (BNIP) family. It interacts with the E1B 19 kDa protein, which protects cells from virally-induced cell death. The encoded protein also interacts with E1B 19 kDa-like sequences of BCL2, another apoptotic protector.
Synonyms:	BNIP-2; NIP2
Note:	Immunogen Sequence Homology: Dog: 100%; Pig: 100%; Rat: 100%; Horse: 100%; Human: 100%; Mouse: 100%; Bovine: 100%; Rabbit: 100%; Guinea pig: 100%



[View online »](#)

Product images:



Host: Rabbit; Target Name: BNIP2; Sample
Tissue: ACHN Whole cell lysates; Antibody
Dilution: 1.0 ug/ml