

Product datasheet for **TA343175**

TOM1L1 Rabbit Polyclonal Antibody

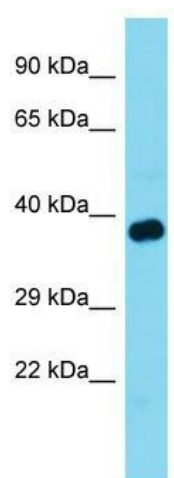
Product data:

Product Type:	Primary Antibodies
Applications:	WB
Recommended Dilution:	WB
Reactivity:	Mouse
Host:	Rabbit
Isotype:	IgG
Clonality:	Polyclonal
Immunogen:	The immunogen for anti-Tom111 antibody is: synthetic peptide directed towards the N-terminal region of MOUSE Tom111. Synthetic peptide located within the following region: INTTQDGPKDAVKALKKRISKNYNHKEIQLSLSLIDMCVQNCGPSFQSLI
Formulation:	Liquid. Purified antibody supplied in 1x PBS buffer with 0.09% (w/v) sodium azide and 2% sucrose.
Purification:	Affinity Purified
Conjugation:	Unconjugated
Storage:	Store at -20°C as received.
Stability:	Stable for 12 months from date of receipt.
Predicted Protein Size:	43 kDa
Gene Name:	target of myb1 like 1 membrane trafficking protein
Database Link:	NP_005477 Entrez Gene 71943 Mouse O75674
Background:	Tom111 is a probable adapter protein involved in signaling pathways. It interacts with the SH2 and SH3 domains of various signaling proteins when it is phosphorylated. This protein may promote FYN activation, possibly by disrupting intramolecular SH3-dependent interactions.
Synonyms:	KNS-CL.3; OK; SRCASM
Note:	Immunogen Sequence Homology: Dog: 100%; Pig: 100%; Rat: 100%; Human: 100%; Mouse: 100%; Bovine: 100%; Rabbit: 100%; Guinea pig: 100%



[View online »](#)

Product images:



Host: Rabbit; Target Name: Tom1l1; Sample
Tissue: Mouse Muscle lysates; Antibody Dilution:
1.0 ug/ml