

Product datasheet for TA343173

SPTBN1 Rabbit Polyclonal Antibody

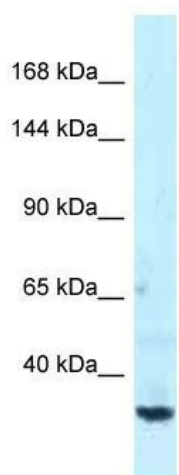
Product data:

Product Type:	Primary Antibodies
Applications:	WB
Recommended Dilution:	WB
Reactivity:	Human
Host:	Rabbit
Isotype:	IgG
Clonality:	Polyclonal
Immunogen:	The immunogen for anti-SPTBN1 antibody is: synthetic peptide directed towards the C-terminal region of Human SPTBN1. Synthetic peptide located within the following region: DKHEVSASTQSTPASSRAQLPTSVTITSESSPGKREKDKEKDKEKRFS
Formulation:	Liquid. Purified antibody supplied in 1x PBS buffer with 0.09% (w/v) sodium azide and 2% sucrose. <i>Note that this product is shipped as lyophilized powder to China customers.</i>
Purification:	Affinity Purified
Conjugation:	Unconjugated
Storage:	Store at -20°C as received.
Stability:	Stable for 12 months from date of receipt.
Predicted Protein Size:	38 kDa
Gene Name:	spectrin beta, non-erythrocytic 1
Database Link:	NP_003119 Entrez Gene 6711 Human Q01082
Background:	The function of this protein remains unknown.
Synonyms:	betaSpII; ELF; HEL102; SPTB2
Note:	Immunogen Sequence Homology: Dog: 100%; Pig: 100%; Rat: 100%; Horse: 100%; Human: 100%; Mouse: 100%; Bovine: 100%; Rabbit: 100%; Guinea pig: 100%; Zebrafish: 90%



[View online »](#)

Product images:



Host: Rabbit; Target Name: SPTBN1; Sample
Tissue: NCI-H226 Whole cell lysates; Antibody
Dilution: 1.0 ug/ml