

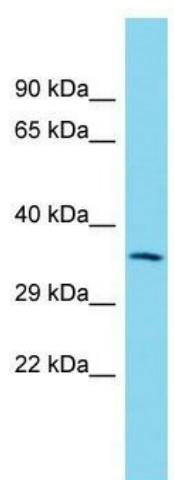
Product datasheet for TA343172

Igbp1b Rabbit Polyclonal Antibody

Product data:

Product Type:	Primary Antibodies
Applications:	WB
Recommended Dilution:	WB
Reactivity:	Rat
Host:	Rabbit
Isotype:	IgG
Clonality:	Polyclonal
Immunogen:	The immunogen for anti-Igbp1b antibody is: synthetic peptide directed towards the middle region of Rat Igbp1b. Synthetic peptide located within the following region: LVAMASQRQAKIQRYKQKKAVEQRLSSLKSAVESGEADDERVREYYLLQL
Formulation:	Liquid. Purified antibody supplied in 1x PBS buffer with 0.09% (w/v) sodium azide and 2% sucrose.
Conjugation:	Unconjugated
Storage:	Store at -20°C as received.
Stability:	Stable for 12 months from date of receipt.
Predicted Protein Size:	37 kDa
Gene Name:	immunoglobulin (CD79A) binding protein 1b
Database Link:	NP_001102825 Entrez Gene 502919 Rat
Background:	The function of this protein remains unknown.
Synonyms:	alpha4-b; RGD1560971
Note:	Immunogen Sequence Homology: Rat: 100%; Human: 100%; Dog: 93%; Pig: 93%; Horse: 93%; Mouse: 93%; Rabbit: 93%; Bovine: 86%; Guinea pig: 86%; Yeast


[View online »](#)

Product images:

Host: Rabbit; Target Name: Igbp1b; Sample
Tissue: Rat Thymus lysates; Antibody Dilution: 1.0
ug/ml