

Product datasheet for **TA343171**

HOMER2 Rabbit Polyclonal Antibody

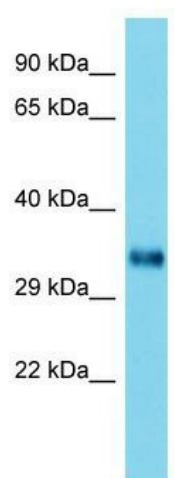
Product data:

Product Type:	Primary Antibodies
Applications:	WB
Recommended Dilution:	WB
Reactivity:	Mouse
Host:	Rabbit
Isotype:	IgG
Clonality:	Polyclonal
Immunogen:	The immunogen for anti-Homer2 antibody is: synthetic peptide directed towards the C-terminal region of Mouse Homer2. Synthetic peptide located within the following region: ICRDENDRLRSKIEELEEQCSEINREKEKNTQLKRRIEELESEVRDKEME
Formulation:	Liquid. Purified antibody supplied in 1x PBS buffer with 0.09% (w/v) sodium azide and 2% sucrose. <i>Note that this product is shipped as lyophilized powder to China customers.</i>
Conjugation:	Unconjugated
Storage:	Store at -20°C as received.
Stability:	Stable for 12 months from date of receipt.
Predicted Protein Size:	31 kDa
Gene Name:	homer scaffolding protein 2
Database Link:	NP_004830 Entrez Gene 26557 Mouse Q9NSB8
Background:	The function of this protein remains unknown.
Synonyms:	ACPD; CPD; DFNA68; HOMER-2; VESL-2
Note:	Immunogen Sequence Homology: Pig: 100%; Rat: 100%; Horse: 100%; Human: 100%; Mouse: 100%; Bovine: 100%; Dog: 93%; Guinea pig: 92%
Protein Families:	Druggable Genome



[View online »](#)

Product images:



Host: Rabbit; Target Name: Homer2; Sample
Tissue: Mouse Testis lysates; Antibody Dilution:
1.0 ug/ml