

Product datasheet for **TA343169**

PDGFC Rabbit Polyclonal Antibody

Product data:

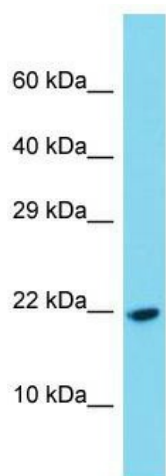
Product Type:	Primary Antibodies
Applications:	WB
Recommended Dilution:	WB
Reactivity:	Human, Mouse
Host:	Rabbit
Isotype:	IgG
Clonality:	Polyclonal
Immunogen:	The immunogen for anti-PDGFC antibody is: synthetic peptide directed towards the C-terminal region of Human PDGFC. Synthetic peptide located within the following region: CTPRNFVSISIREELKRTDTIFWPGCLLVKRCGGNCACCLHNCNECQCVPS
Formulation:	Liquid. Purified antibody supplied in 1x PBS buffer with 0.09% (w/v) sodium azide and 2% sucrose. <i>Note that this product is shipped as lyophilized powder to China customers.</i>
Conjugation:	Unconjugated
Storage:	Store at -20°C as received.
Stability:	Stable for 12 months from date of receipt.
Predicted Protein Size:	20 kDa
Gene Name:	platelet derived growth factor C
Database Link:	NP_057289 Entrez Gene 54635 Mouse Entrez Gene 56034 Human Q9NRA1
Background:	The function of this protein remains unknown.
Synonyms:	FALLOTEIN; SCDGF
Note:	Immunogen Sequence Homology: Dog: 100%; Pig: 100%; Rat: 100%; Horse: 100%; Human: 100%; Mouse: 100%; Rabbit: 100%; Bovine: 93%; Zebrafish: 92%
Protein Families:	Adult stem cells, Druggable Genome, Embryonic stem cells, ES Cell Differentiation/IPS, Induced pluripotent stem cells



[View online »](#)

Protein Pathways: Cytokine-cytokine receptor interaction, Focal adhesion, Gap junction, Melanoma, Prostate cancer, Regulation of actin cytoskeleton

Product images:



Host: Rabbit; Target Name: PDGFC; Sample Tissue: Fetal Liver lysates; Antibody Dilution: 1.0 ug/ml