

## Product datasheet for **TA343168**

### PDGFC Rabbit Polyclonal Antibody

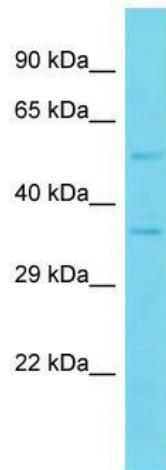
#### Product data:

Product Type:	Primary Antibodies
Applications:	WB
Recommended Dilution:	WB
Reactivity:	Mouse
Host:	Rabbit
Isotype:	IgG
Clonality:	Polyclonal
Immunogen:	The immunogen for anti-Pdgfc antibody is: synthetic peptide directed towards the N-terminal region of Mouse Pdgfc. Synthetic peptide located within the following region: MLLLGLLLLTSALAGQRTGTRAESNLSSKLQSSDKEQNGVQDPRHERVV
Formulation:	Liquid. Purified antibody supplied in 1x PBS buffer with 0.09% (w/v) sodium azide and 2% sucrose. <i>Note that this product is shipped as lyophilized powder to China customers.</i>
Conjugation:	Unconjugated
Storage:	Store at -20°C as received.
Stability:	Stable for 12 months from date of receipt.
Predicted Protein Size:	39 kDa
Gene Name:	platelet derived growth factor C
Database Link:	<a href="#">NP_057289</a> <a href="#">Entrez Gene 54635 Mouse</a> <a href="#">Q9NRA1</a>



[View online »](#)

<b>Background:</b>	Growth factor that plays an essential role in the regulation of embryonic development, cell proliferation, cell migration, survival and chemotaxis. Potent mitogen and chemoattractant for cells of mesenchymal origin. Required for normal skeleton formation during embryonic development, especially for normal development of the craniofacial skeleton and for normal development of the palate. Required for normal skin morphogenesis during embryonic development. Plays an important role in wound healing, where it appears to be involved in three stages: inflammation, proliferation and remodeling. Plays an important role in angiogenesis and blood vessel development. Involved in fibrotic processes, in which transformation of interstitial fibroblasts into myofibroblasts plus collagen deposition occurs. The CUB domain has mitogenic activity in coronary artery smooth muscle cells, suggesting a role beyond the maintenance of the latency of the PDGF domain. In the nucleus, PDGFC seems to have additional function.
<b>Synonyms:</b>	FALLOTEIN; SCDGF
<b>Note:</b>	Immunogen Sequence Homology: Horse: 100%; Human: 100%; Rabbit: 100%; Rat: 86%; Mouse: 86%
<b>Protein Families:</b>	Adult stem cells, Druggable Genome, Embryonic stem cells, ES Cell Differentiation/IPS, Induced pluripotent stem cells
<b>Protein Pathways:</b>	Cytokine-cytokine receptor interaction, Focal adhesion, Gap junction, Melanoma, Prostate cancer, Regulation of actin cytoskeleton

**Product images:**

Host: Rabbit; Target Name: Pdgfc; Sample Tissue: Mouse Heart lysates; Antibody Dilution: 1.0 ug/ml