

Product datasheet for **TA343165**

D4 (ARHGDIB) Rabbit Polyclonal Antibody

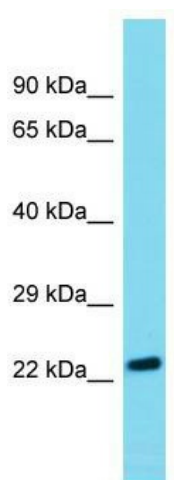
Product data:

Product Type:	Primary Antibodies
Applications:	WB
Recommended Dilution:	WB
Reactivity:	Human
Host:	Rabbit
Isotype:	IgG
Clonality:	Polyclonal
Immunogen:	The immunogen for anti-ARHGDIB antibody is: synthetic peptide directed towards the N-terminal region of Human ARHGDIB. Synthetic peptide located within the following region: MTEKAPEPHVEEDDDDELDSKLNYPKPPQKSLKELQEMDKDDESLIKYKK
Formulation:	Liquid. Purified antibody supplied in 1x PBS buffer with 0.09% (w/v) sodium azide and 2% sucrose. <i>Note that this product is shipped as lyophilized powder to China customers.</i>
Conjugation:	Unconjugated
Storage:	Store at -20°C as received.
Stability:	Stable for 12 months from date of receipt.
Predicted Protein Size:	23 kDa
Gene Name:	Rho GDP dissociation inhibitor beta
Database Link:	NP_001166 Entrez Gene 397 Human P52566
Background:	Members of the Rho (or ARH) protein family and other Ras-related small GTP-binding proteins are involved in diverse cellular events, including cell signaling, proliferation, cytoskeletal organization, and secretion. The GTP-binding proteins are active only in the GTP-bound state. At least 3 classes of proteins tightly regulate cycling between the GTP-bound and GDP-bound states: GTPase-activating proteins (GAPs), guanine nucleotide-releasing factors (GRFs), and GDP-dissociation inhibitors (GDIs). The GDIs, including ARHGDIB, decrease the rate of GDP dissociation from Ras-like GTPases.



[View online »](#)

Synonyms:	D4; GDIA2; GDID4; Ly-GDI; LYGDI; RAP1GN1; RhoGDI2
Note:	Immunogen Sequence Homology: Pig: 100%; Rat: 100%; Horse: 100%; Mouse: 100%; Bovine: 100%; Rabbit: 100%; Guinea pig: 100%; Dog: 93%; Human: 93%; Zebrafish: 93%
Protein Families:	Druggable Genome
Protein Pathways:	Neurotrophin signaling pathway

Product images:

Host: Rabbit; Target Name: ARHGDIB; Sample Tissue: 721_B Whole Cell lysates; Antibody Dilution: 1.0 ug/ml ARHGDIB is supported by BioGPS gene expression data to be expressed in 721_B