

## Product datasheet for **TA343164**

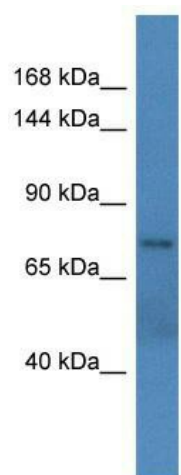
### **BIG1 (ARFGEF1) Rabbit Polyclonal Antibody**

#### **Product data:**

Product Type:	Primary Antibodies
Applications:	WB
Recommended Dilution:	WB
Reactivity:	Human
Host:	Rabbit
Isotype:	IgG
Clonality:	Polyclonal
Immunogen:	The immunogen for anti-ARFGEF1 antibody is: synthetic peptide directed towards the middle region of Human ARFGEF1. Synthetic peptide located within the following region: SDVLLDDIFAQLYWCVQQDNEQLARSGTNCLENVVLNGEKFTLEIWDKT
Formulation:	Liquid. Purified antibody supplied in 1x PBS buffer with 0.09% (w/v) sodium azide and 2% sucrose.
Purification:	Affinity Purified
Conjugation:	Unconjugated
Storage:	Store at -20°C as received.
Stability:	Stable for 12 months from date of receipt.
Predicted Protein Size:	77 kDa
Gene Name:	ADP ribosylation factor guanine nucleotide exchange factor 1
Database Link:	<a href="#">NP_006412</a> <a href="#">Entrez Gene 10565 Human</a> <a href="#">Q9Y6D6</a>
Background:	The function of this protein remains unknown.
Synonyms:	ARFGEF1; BIG1; P200
Note:	Immunogen Sequence Homology: Dog: 100%; Pig: 100%; Rat: 100%; Horse: 100%; Human: 100%; Mouse: 100%; Bovine: 100%; Rabbit: 100%; Zebrafish: 100%; Guinea pig: 100%



[View online »](#)

**Product images:**


Host: Rabbit; Target Name: ARFGEF1; Sample  
Tissue: Fetal Liver lysates; Antibody Dilution: 1.0  
ug/ml