

## Product datasheet for **TA343162**

### IFIT1 Rabbit Polyclonal Antibody

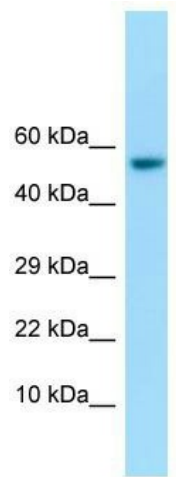
#### Product data:

Product Type:	Primary Antibodies
Applications:	WB
Recommended Dilution:	WB
Reactivity:	Human
Host:	Rabbit
Isotype:	IgG
Clonality:	Polyclonal
Immunogen:	The immunogen for anti-IFIT1 antibody is: synthetic peptide directed towards the C-terminal region of Human IFIT1. Synthetic peptide located within the following region: ALELLKKALQETPTSVLLHHQIGLCYKAQMIQIKEATKGQPRGQNREKLD
Formulation:	Liquid. Purified antibody supplied in 1x PBS buffer with 0.09% (w/v) sodium azide and 2% sucrose. <i>Note that this product is shipped as lyophilized powder to China customers.</i>
Conjugation:	Unconjugated
Storage:	Store at -20°C as received.
Stability:	Stable for 12 months from date of receipt.
Predicted Protein Size:	55 kDa
Gene Name:	interferon induced protein with tetratricopeptide repeats 1
Database Link:	<a href="#">NP_001539</a> <a href="#">Entrez Gene 3434 Human</a> <a href="#">P09914</a>
Background:	The function of this protein remains unknown.
Synonyms:	C56; G10P1; IFI-56; IFI-56K; IFI56; IFIT-1; IFNAI1; ISG56; P56; RNM561
Note:	Immunogen Sequence Homology: Human: 100%

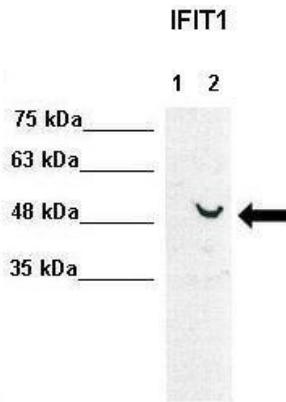


[View online »](#)

Product images:



WB Suggested Anti-IFIT1 Antibody; Titration: 1.0 ug/ml; Positive Control: Fetal Stomach



WB Suggested Anti-IFIT1 Antibody; Positive Control: Lane 1: 30ug human Huh7, Lane 2: 30ug human Huh7+IFNB stimulated; Primary Antibody Dilution : 1:1000; Secondary Antibody : Anti-rabbit-HRP; Secondary Antibody Dilution : 1:5000; Submitted by: Takeshi Saito,