

## Product datasheet for **TA343161**

### Shugoshin (SGO1) Rabbit Polyclonal Antibody

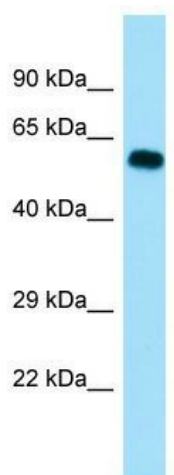
#### Product data:

Product Type:	Primary Antibodies
Applications:	WB
Recommended Dilution:	WB
Reactivity:	Human
Host:	Rabbit
Isotype:	IgG
Clonality:	Polyclonal
Immunogen:	The immunogen for anti-SGOL1 antibody is: synthetic peptide directed towards the C-terminal region of Human SGOL1. Synthetic peptide located within the following region: NSDRPVTRPLAKRALKYTDEKETEGSKPTKPTTTPPETQQSPHLSLKDI
Formulation:	Liquid. Purified antibody supplied in 1x PBS buffer with 0.09% (w/v) sodium azide and 2% sucrose. <i>Note that this product is shipped as lyophilized powder to China customers.</i>
Conjugation:	Unconjugated
Storage:	Store at -20°C as received.
Stability:	Stable for 12 months from date of receipt.
Predicted Protein Size:	60 kDa
Gene Name:	shugoshin 1
Database Link:	<a href="#">NP_001012409</a> <a href="#">Entrez Gene 151648 Human</a> <a href="#">Q5FBB7</a>
Background:	The function of this protein remains unknown.
Synonyms:	CAID; NY-BR-85; SGO; SGOL1
Note:	Immunogen Sequence Homology: Human: 100%; Horse: 91%; Rat: 79%
Protein Pathways:	Oocyte meiosis



[View online »](#)

Product images:



WB Suggested Anti-SGO1 Antibody; Titration: 1.0 ug/ml; Positive Control: Fetal Thymus