

## Product datasheet for **TA343159**

### E2F6 Rabbit Polyclonal Antibody

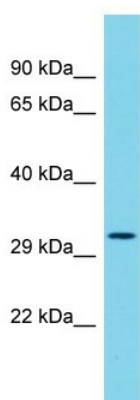
#### Product data:

Product Type:	Primary Antibodies
Recommended Dilution:	WB
Reactivity:	Rat
Host:	Rabbit
Isotype:	IgG
Clonality:	Polyclonal
Immunogen:	The immunogen for anti-E2f6 antibody is: synthetic peptide directed towards the middle region of Rat E2f6. Synthetic peptide located within the following region: RRVYDITNVLDGIELVEKKSKNHIRWIGSDLNNFGAAPQQKQLQAELSDL
Formulation:	Liquid. Purified antibody supplied in 1x PBS buffer with 0.09% (w/v) sodium azide and 2% sucrose.
Conjugation:	Unconjugated
Storage:	Store at -20°C as received.
Stability:	Stable for 12 months from date of receipt.
Predicted Protein Size:	29 kDa
Gene Name:	E2F transcription factor 6
Database Link:	<a href="#">NP_937987</a> <a href="#">Entrez Gene 313978 Rat O75461</a>
Background:	Mouse homolog is a transcription factor and is involved in the regulation of cell cycle progression.
Synonyms:	E2F-6
Note:	Immunogen Sequence Homology: Dog: 100%; Pig: 100%; Horse: 100%; Human: 100%; Bovine: 100%; Rat: 93%; Mouse: 93%; Guinea pig: 93%; Rabbit: 85%
Protein Families:	Transcription Factors



[View online »](#)

Product images:



Host: Rabbit  
Target Name: E2f6  
Sample Type: Rat Thymus lysates  
Antibody Dilution: 1.0ug/ml