

Product datasheet for **TA343155**

GRK6 Rabbit Polyclonal Antibody

Product data:

Product Type:	Primary Antibodies
Applications:	WB
Recommended Dilution:	WB
Reactivity:	Human
Host:	Rabbit
Isotype:	IgG
Clonality:	Polyclonal
Immunogen:	The immunogen for anti-GRK6 antibody is: synthetic peptide directed towards the C-terminal region of Human GRK6. Synthetic peptide located within the following region: LYEMIAGQSPFQQRKKIKREEVERLVKEVPEEYSERFSPQARSLSQLL
Formulation:	Liquid. Purified antibody supplied in 1x PBS buffer with 0.09% (w/v) sodium azide and 2% sucrose. <i>Note that this product is shipped as lyophilized powder to China customers.</i>
Conjugation:	Unconjugated
Storage:	Store at -20°C as received.
Stability:	Stable for 12 months from date of receipt.
Predicted Protein Size:	67 kDa
Gene Name:	G protein-coupled receptor kinase 6
Database Link:	NP_002073 Entrez Gene 2870 Human P43250
Background:	This gene encodes a member of the guanine nucleotide-binding protein (G protein)-coupled receptor kinase subfamily of the Ser/Thr protein kinase family. The protein phosphorylates the activated forms of G protein-coupled receptors thus initiating their deactivation. Several transcript variants encoding different isoforms have been described for this gene.
Synonyms:	GPRK6
Note:	Immunogen Sequence Homology: Dog: 100%; Pig: 100%; Rat: 100%; Human: 100%; Rabbit: 100%; Guinea pig: 100%; Horse: 93%; Bovine: 93%

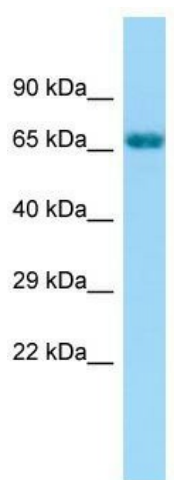


[View online »](#)

Protein Families: Druggable Genome, Protein Kinase

Protein Pathways: Chemokine signaling pathway, Endocytosis

Product images:



WB Suggested Anti-GRK6 Antibody; Titration: 1.0 ug/ml; Positive Control: Fetal Bladder