

Product datasheet for **TA343153**

ABI2 Rabbit Polyclonal Antibody

Product data:

Product Type:	Primary Antibodies
Applications:	WB
Recommended Dilution:	WB
Reactivity:	Human
Host:	Rabbit
Isotype:	IgG
Clonality:	Polyclonal
Immunogen:	The immunogen for anti-ABI2 antibody is: synthetic peptide directed towards the N-terminal region of Human ABI2. Synthetic peptide located within the following region: MLLEEEIPGGRRALFDSYTNLERVADYCENNYIQSADKQRALEETKAYTT
Formulation:	Liquid. Purified antibody supplied in 1x PBS buffer with 0.09% (w/v) sodium azide and 2% sucrose. <i>Note that this product is shipped as lyophilized powder to China customers.</i>
Conjugation:	Unconjugated
Storage:	Store at -20°C as received.
Stability:	Stable for 12 months from date of receipt.
Predicted Protein Size:	52 kDa
Gene Name:	abl-interactor 2
Database Link:	NP_005750 Entrez Gene 10152 Human Q9NYB9
Background:	ABI2 may act in regulation of cell growth and transformation by interacting with nonreceptor tyrosine kinases ABL1 and/or ABL2. ABI2 is a part of the WAVE complex that regulates lamellipodia formation. The WAVE complex regulates actin filament reorganization via its interaction with the Arp2/3 complex. It regulates ABL1/c-Abl-mediated phosphorylation of MENA.
Synonyms:	ABI-2; ABI2B; AblBP3; AIP-1; argBP1; argBP1A; argBP1B; SSH3BP2

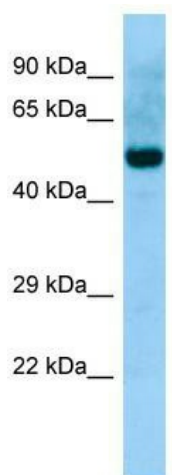


[View online »](#)

Note: Immunogen Sequence Homology: Dog: 100%; Pig: 100%; Rat: 100%; Horse: 100%; Human: 100%; Bovine: 100%; Rabbit: 100%; Guinea pig: 100%; Mouse: 93%; Zebrafish: 85%; Yeast: 83%

Protein Pathways: Regulation of actin cytoskeleton

Product images:



WB Suggested Anti-ABI2 Antibody; Titration: 1.0 ug/ml; Positive Control: Fetal Stomach