

Name:Rabbit Polyclonal Anti-DHH Antibody**Catalog:** TA343152**Product Data Sheet - ANTIBODY**

Components:	Rabbit Polyclonal Anti-DHH Antibody (TA343152)
Amount:	100ul
Immunogen:	The immunogen for anti-Dhh antibody is: synthetic peptide directed towards the N-terminal region of Mouse Dhh. Synthetic peptide located within the following region: FRDLVPNYNPDIIFKDEENSGADRLMTERCKERVNALIAIVMNMWPGVRL
Host:	Rabbit
Isotype:	IgG
Species Reactivity:	Mouse
Guaranteed Applications:	WB
Suggested Dilutions:	WB
Concentration:	
Buffer:	Liquid. Purified antibody supplied in 1x PBS buffer with 0.09% (w/v) sodium azide and 2% sucrose.
Purification:	
Storage Condition:	Shipped at -20°C or with ice packs, Upon delivery store at -20°C. Dilute in PBS(pH7.3) if necessary. Stable for 12 months from date of receipt. Avoid repeated freeze-thaws.

Target

Target Name:	DHH
Alternative Name:	GDXYM; HHG-3; SRXY7
Database Link:	NP_066382 Entrez Gene 50846 human

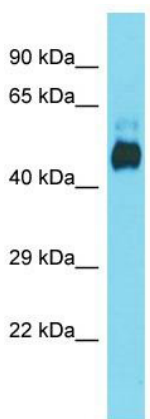
[Entrez Gene 13363 mouse](#)
[Entrez Gene 84380 rat](#)
[Entrez Gene 100685337 dog](#)

Function: Dhh is an intercellular signal essential for a variety of patterning events during development. It may function as a spermatocyte survival factor in the testes and it is essential for testes development.

Other designations: desert hedgehog protein"

Other: GDXYM; HHG-3; SRXY7

Validation Data



Host: Rabbit; Target Name: Dhh; Sample Tissue: Mouse
Kidney lysates; Antibody Dilution: 1.0 ug/ml

* More validation images may be available on our website:

<https://www.origene.com/catalog/antibodies/primary-antibodies/ta343152/dhh-rabbit-polyclonal-antibody>