

Product datasheet for **TA343151**

EIF4B Rabbit Polyclonal Antibody

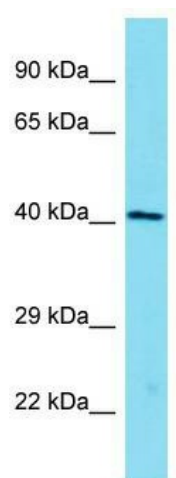
Product data:

Product Type:	Primary Antibodies
Applications:	WB
Recommended Dilution:	WB
Reactivity:	Mouse
Host:	Rabbit
Isotype:	IgG
Clonality:	Polyclonal
Immunogen:	The immunogen for anti-Eif4b antibody is: synthetic peptide directed towards the C-terminal region of Mouse Eif4b. Synthetic peptide located within the following region: DGGSRDHWKDLDRKDGKKDQDSRSAPEPKKPEENPASKFSSASKYAALSV
Formulation:	Liquid. Purified antibody supplied in 1x PBS buffer with 0.09% (w/v) sodium azide and 2% sucrose. <i>Note that this product is shipped as lyophilized powder to China customers.</i>
Conjugation:	Unconjugated
Storage:	Store at -20°C as received.
Stability:	Stable for 12 months from date of receipt.
Predicted Protein Size:	41 kDa
Gene Name:	eukaryotic translation initiation factor 4B
Database Link:	NP_001408 Entrez Gene 75705 Mouse P23588
Background:	The function of this protein remains unknown.
Synonyms:	EIF-4B; PRO1843
Note:	Immunogen Sequence Homology: Bovine: 100%; Dog: 93%; Pig: 93%; Rat: 93%; Horse: 93%; Human: 93%; Mouse: 93%; Guinea pig: 93%; Rabbit: 86%
Protein Pathways:	mTOR signaling pathway



[View online »](#)

Product images:



Host: Rabbit; Target Name: Eif4b; Sample Tissue: Mouse Brain lysates; Antibody Dilution: 1.0 ug/ml