

Product datasheet for **TA343150**

AP2 beta (TFAP2B) Rabbit Polyclonal Antibody

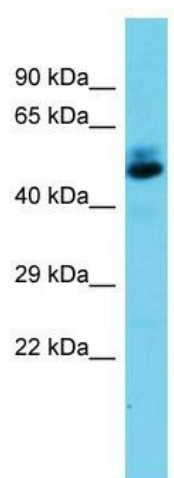
Product data:

Product Type:	Primary Antibodies
Applications:	WB
Recommended Dilution:	WB
Reactivity:	Rat
Host:	Rabbit
Isotype:	IgG
Clonality:	Polyclonal
Immunogen:	The immunogen for anti-Tfap2b antibody is: synthetic peptide directed towards the N-terminal region of Rat Tfap2b. Synthetic peptide located within the following region: HPWGQRQRQEVGSEAGSLLPQPRAALPQLSGLDPRRDYHSVRRPDVLLHS
Formulation:	Liquid. Purified antibody supplied in 1x PBS buffer with 0.09% (w/v) sodium azide and 2% sucrose. <i>Note that this product is shipped as lyophilized powder to China customers.</i>
Conjugation:	Unconjugated
Storage:	Store at -20°C as received.
Stability:	Stable for 12 months from date of receipt.
Predicted Protein Size:	49 kDa
Gene Name:	transcription factor AP-2 beta
Database Link:	NP_003212 Entrez Gene 301285 Rat Q92481
Background:	The function of this protein remains unknown.
Synonyms:	AP-2B; AP2-B
Note:	Immunogen Sequence Homology: Dog: 100%; Pig: 100%; Rat: 100%; Horse: 100%; Human: 100%; Mouse: 100%; Bovine: 100%; Rabbit: 100%
Protein Families:	Druggable Genome, Transcription Factors



[View online »](#)

Product images:



Host: Rabbit; Target Name: Tfp2b; Sample
Tissue: Rat Heart lysates; Antibody Dilution: 1.0
ug/ml