

Product datasheet for **TA343147**

RACK1 Rabbit Polyclonal Antibody

Product data:

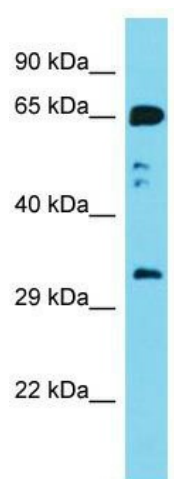
Product Type:	Primary Antibodies
Applications:	WB
Recommended Dilution:	WB
Reactivity:	Mouse
Host:	Rabbit
Isotype:	IgG
Clonality:	Polyclonal
Immunogen:	The immunogen for anti-Gnb2l1 antibody is: synthetic peptide directed towards the C-terminal region of Mouse Gnb2l1. Synthetic peptide located within the following region: HIGHTGYLNTVTVSPDGSLCASGGKDGQAMLWDLNEGKHLYTLGGDIIN
Formulation:	Liquid. Purified antibody supplied in 1x PBS buffer with 0.09% (w/v) sodium azide and 2% sucrose. <i>Note that this product is shipped as lyophilized powder to China customers.</i>
Conjugation:	Unconjugated
Storage:	Store at -20°C as received.
Stability:	Stable for 12 months from date of receipt.
Predicted Protein Size:	35 kDa
Gene Name:	receptor for activated C kinase 1
Database Link:	NP_006089 Entrez Gene 14694 Mouse P63244
Background:	Gnb2l1 is involved in the recruitment, assembly and/or regulation of a variety of signaling molecules. Gnb2l1 interacts with a wide variety of proteins and plays a role in many cellular processes.
Synonyms:	Gnb2-rs1; GNB2L1; H12.3; HLC-7; PIG21
Note:	Immunogen Sequence Homology: Dog: 100%; Pig: 100%; Rat: 100%; Goat: 100%; Horse: 100%; Human: 100%; Mouse: 100%; Sheep: 100%; Yeast: 100%; Bovine: 100%; Rabbit: 100%; Zebrafish: 100%; Guinea pig: 100%



[View online »](#)

Protein Families: Druggable Genome

Product images:



Host: Rabbit; Target Name: Gnb2l1; Sample
Tissue: Mouse Stomach lysates; Antibody
Dilution: 1.0 ug/ml