

## Product datasheet for **TA343146**

### Prostaglandin D2 Receptor (PTGDR) Rabbit Polyclonal Antibody

#### Product data:

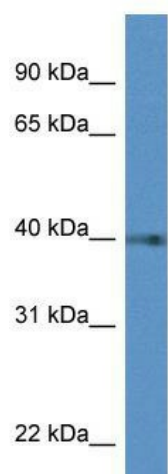
Product Type:	Primary Antibodies
Applications:	WB
Recommended Dilution:	WB
Reactivity:	Human
Host:	Rabbit
Isotype:	IgG
Clonality:	Polyclonal
Immunogen:	The immunogen for anti-PTGDR antibody: synthetic peptide directed towards the C terminal of human PTGDR. Synthetic peptide located within the following region: FKDVKEKNRTSEEAEDLRALRFLSVISIVDPWIFIIFRSPVFRIFFFHKIF
Formulation:	Liquid. Purified antibody supplied in 1x PBS buffer with 0.09% (w/v) sodium azide and 2% sucrose. <i>Note that this product is shipped as lyophilized powder to China customers.</i>
Conjugation:	Unconjugated
Storage:	Store at -20°C as received.
Stability:	Stable for 12 months from date of receipt.
Predicted Protein Size:	40 kDa
Gene Name:	prostaglandin D2 receptor (DP)
Database Link:	<a href="#">NP_000944</a> <a href="#">Entrez Gene 5729 Human</a> <a href="#">Q13258</a>
Background:	PTGDR is a receptor for prostaglandin D2 (PGD2). The activity of this receptor is mainly mediated by G(s) proteins that stimulate adenylate cyclase, resulting in an elevation of intracellular cAMP. A mobilization of calcium is also observed, but without formation of inositol 1,4,5-trisphosphate.
Synonyms:	AS1; ASRT1; DP; DP1; PTGDR1
Note:	Immunogen Sequence Homology: Human: 100%
Protein Families:	Druggable Genome, GPCR, Transmembrane



[View online »](#)

Protein Pathways: Neuroactive ligand-receptor interaction

### Product images:



WB Suggested Anti-PTGDR Antibody; Titration:  
1.0 ug/ml; Positive Control: Hela Whole Cell