

Product datasheet for **TA343139**

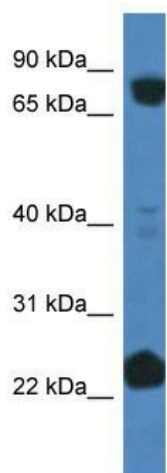
Cullin 3 (CUL3) Rabbit Polyclonal Antibody

Product data:

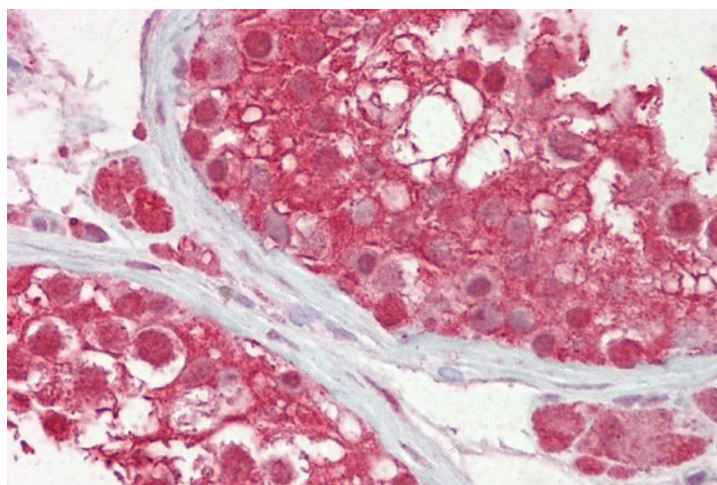
Product Type:	Primary Antibodies
Applications:	IHC, WB
Recommended Dilution:	WB, IHC
Reactivity:	Human
Host:	Rabbit
Isotype:	IgG
Clonality:	Polyclonal
Immunogen:	The immunogen for anti-CUL3 antibody: synthetic peptide directed towards the C terminal of human CUL3. Synthetic peptide located within the following region: QETDIPERELVRALQSLACGKPTQRVLTKEPKSKEIENGHIFTVNDQFTS
Formulation:	Liquid. Purified antibody supplied in 1x PBS buffer with 0.09% (w/v) sodium azide and 2% sucrose. <i>Note that this product is shipped as lyophilized powder to China customers.</i>
Conjugation:	Unconjugated
Storage:	Store at -20°C as received.
Stability:	Stable for 12 months from date of receipt.
Predicted Protein Size:	84 kDa
Gene Name:	cullin 3
Database Link:	NP_003581 Entrez Gene 8452 Human Q13618
Background:	CUL3 is a component of a ubiquitin E3 ligase that is essential for mitotic division.
Synonyms:	CUL-3; PHA2E
Note:	Immunogen Sequence Homology: Dog: 100%; Pig: 100%; Rat: 100%; Horse: 100%; Human: 100%; Bovine: 100%; Rabbit: 100%; Zebrafish: 100%; Guinea pig: 100%; Mouse: 93%
Protein Families:	Druggable Genome
Protein Pathways:	Ubiquitin mediated proteolysis



[View online »](#)

Product images:

WB Suggested Anti-CUL3 Antibody Titration: 1 ug/ml; Positive Control: Fetal liver cell lysate



Immunohistochemistry with Testis tissue at an antibody concentration of 10 ug/ml using anti-CUL3 antibody