

Product datasheet for **TA343138**

CD39 (ENTPD1) Rabbit Polyclonal Antibody

Product data:

Product Type:	Primary Antibodies
Applications:	WB
Recommended Dilution:	WB
Reactivity:	Human
Host:	Rabbit
Isotype:	IgG
Clonality:	Polyclonal
Immunogen:	The immunogen for anti-ENTPD1 antibody: synthetic peptide directed towards the N terminal of human ENTPD1. Synthetic peptide located within the following region: AREVIPRSQHQETPVYLGATAGMRLLRMESEELADRVLDDVVERSLSNYPF
Formulation:	Liquid. Purified antibody supplied in 1x PBS buffer with 0.09% (w/v) sodium azide and 2% sucrose. <i>Note that this product is shipped as lyophilized powder to China customers.</i>
Conjugation:	Unconjugated
Storage:	Store at -20°C as received.
Stability:	Stable for 12 months from date of receipt.
Predicted Protein Size:	56 kDa
Gene Name:	ectonucleoside triphosphate diphosphohydrolase 1
Database Link:	NP_001767 Entrez Gene 953 Human P49961
Background:	In the nervous system, ENTPD1 could hydrolyze ATP and other nucleotides to regulate purinergic neurotransmission. ENTPD1 could also be implicated in the prevention of platelet aggregation. It hydrolyzes ATP and ADP equally well.
Synonyms:	ATPDase; CD39; NTPDase-1; SPG64
Note:	Immunogen Sequence Homology: Human: 100%; Horse: 86%; Rabbit: 86%; Dog
Protein Families:	Transmembrane



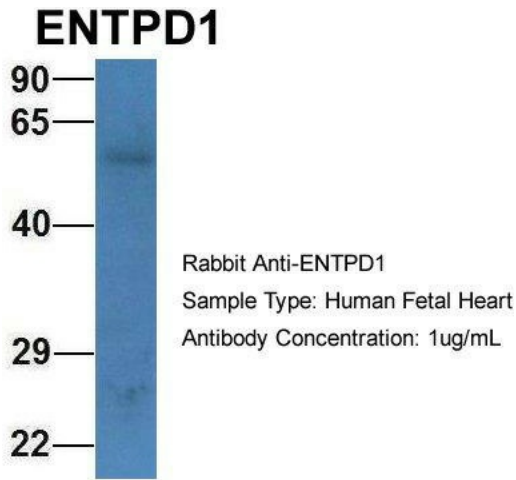
[View online »](#)

Protein Pathways: Purine metabolism, Pyrimidine metabolism

Product images:



WB Suggested Anti-ENTPD1 Antibody; Titration: 1.0 ug/ml; Positive Control: MCF7 Whole Cell



Host: Rabbit; Target Name: ENTPD1; Sample Tissue: Human Fetal Heart; Antibody Dilution: 1.0 ug/ml