

Product datasheet for **TA343136**

UDP glucose dehydrogenase (UGDH) Rabbit Polyclonal Antibody

Product data:

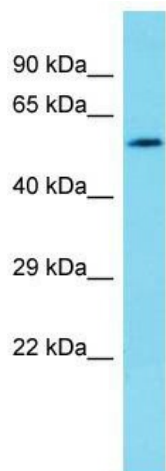
Product Type:	Primary Antibodies
Applications:	WB
Recommended Dilution:	WB
Reactivity:	Rat
Host:	Rabbit
Isotype:	IgG
Clonality:	Polyclonal
Immunogen:	The immunogen for anti-Ugdh antibody is: synthetic peptide directed towards the C-terminal region of Rat Ugdh. Synthetic peptide located within the following region: AFKKDTGDTRESSSIYISKYLMDEGAHLHIYDPKVPREQIVVDLSHPGVS
Formulation:	Liquid. Purified antibody supplied in 1x PBS buffer with 0.09% (w/v) sodium azide and 2% sucrose. <i>Note that this product is shipped as lyophilized powder to China customers.</i>
Conjugation:	Unconjugated
Storage:	Store at -20°C as received.
Stability:	Stable for 12 months from date of receipt.
Predicted Protein Size:	54 kDa
Gene Name:	UDP-glucose 6-dehydrogenase
Database Link:	NP_003350 Entrez Gene 83472 Rat O60701
Background:	Ugdh is involved in the biosynthesis of glycosaminoglycans; hyaluronan, chondroitin sulfate, and heparan sulfate.
Synonyms:	GDH; UDP-GlcDH; UDPGDH; UGD
Note:	Immunogen Sequence Homology: Dog: 100%; Pig: 100%; Rat: 100%; Goat: 100%; Horse: 100%; Human: 100%; Mouse: 100%; Yeast: 100%; Bovine: 100%; Rabbit: 100%; Zebrafish: 100%; Guinea pig: 100%



[View online »](#)

Protein Pathways:

Amino sugar and nucleotide sugar metabolism, Ascorbate and aldarate metabolism, Metabolic pathways, Pentose and glucuronate interconversions, Starch and sucrose metabolism

Product images:

Host: Rabbit; Target Name: Ugdh; Sample Tissue: Rat Stomach lysates; Antibody Dilution: 1.0 ug/ml