

## Product datasheet for **TA343135**

### HCK Rabbit Polyclonal Antibody

#### Product data:

Product Type:	Primary Antibodies
Applications:	WB
Recommended Dilution:	WB
Reactivity:	Human, Mouse
Host:	Rabbit
Isotype:	IgG
Clonality:	Polyclonal
Immunogen:	The immunogen for anti-HCK antibody is: synthetic peptide directed towards the C-terminal region of Human HCK. Synthetic peptide located within the following region: LVKLVHAVVTKEPIYIITEFMAKGSLLDFLKSDEGSKQPLPKLIDFSAQIA
Formulation:	Liquid. Purified antibody supplied in 1x PBS buffer with 0.09% (w/v) sodium azide and 2% sucrose. <i>Note that this product is shipped as lyophilized powder to China customers.</i>
Conjugation:	Unconjugated
Storage:	Store at -20°C as received.
Stability:	Stable for 12 months from date of receipt.
Predicted Protein Size:	55 kDa
Gene Name:	HCK proto-oncogene, Src family tyrosine kinase
Database Link:	<a href="#">NP_001165602</a> <a href="#">Entrez Gene 15162 Mouse</a> <a href="#">Entrez Gene 3055 Human</a> <a href="#">P08631</a>
Background:	The protein encoded by this gene is a member of the Src family of tyrosine kinases. This protein is primarily hemopoietic, particularly in cells of the myeloid and B-lymphoid lineages. It may help couple the Fc receptor to the activation of the respiratory burst. In addition, it may play a role in neutrophil migration and in the degranulation of neutrophils. Multiple isoforms with different subcellular distributions are produced due to both alternative splicing and the use of alternative translation initiation codons, including a non-AUG (CUG) codon.
Synonyms:	JTK9



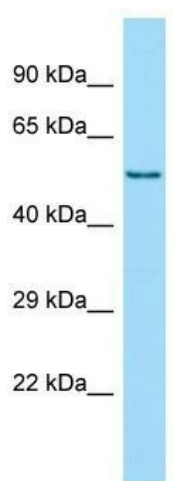
[View online »](#)

**Note:** Immunogen Sequence Homology: Human: 100%; Dog: 93%; Rat: 93%; Horse: 93%; Mouse: 93%; Pig: 86%; Bovine: 86%; Guinea pig: 86%; Rabbit: 79%

**Protein Families:** Druggable Genome, Protein Kinase

**Protein Pathways:** Chemokine signaling pathway, Fc gamma R-mediated phagocytosis

**Product images:**



WB Suggested Anti-HCK Antibody; Titration: 1.0 ug/ml; Positive Control: Fetal Thymus