

## Product datasheet for **TA343134**

### Transcription termination factor 1 (TTF1) Rabbit Polyclonal Antibody

#### Product data:

Product Type:	Primary Antibodies
Applications:	WB
Recommended Dilution:	WB
Reactivity:	Human
Host:	Rabbit
Isotype:	IgG
Clonality:	Polyclonal
Immunogen:	The immunogen for anti-TTF1 antibody: synthetic peptide directed towards the middle region of human TTF1. Synthetic peptide located within the following region: KNSESTLFDSVEGDGAMMEEGVKSRPRQKKTQACLASKHVQEAPRLEPAN
Formulation:	Liquid. Purified antibody supplied in 1x PBS buffer with 0.09% (w/v) sodium azide and 2% sucrose. <i>Note that this product is shipped as lyophilized powder to China customers.</i>
Conjugation:	Unconjugated
Storage:	Store at -20°C as received.
Stability:	Stable for 12 months from date of receipt.
Predicted Protein Size:	103 kDa
Gene Name:	transcription termination factor 1
Database Link:	<a href="#">NP_031370</a> <a href="#">Entrez Gene 7270 Human</a> <a href="#">Q15361</a>

**Background:** This gene encodes a transcription termination factor that is localized to the nucleolus and plays a critical role in ribosomal gene transcription. The encoded protein mediates the termination of RNA polymerase I transcription by binding to Sal box terminator elements downstream of pre-rRNA coding regions. Alternatively spliced transcript variants encoding multiple isoforms have been observed for this gene. This gene shares the symbol/alias 'TTF1' with another gene, NK2 homeobox 1, also known as thyroid transcription factor 1, which plays a role in the regulation of thyroid-specific gene expression.

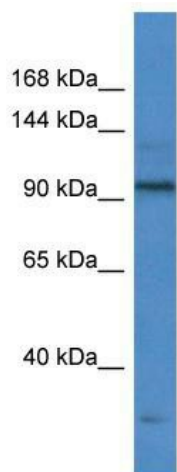


[View online »](#)

Synonyms: TTF-1; TTF-I

Note: Immunogen Sequence Homology: Human: 100%

### Product images:



WB Suggested Anti-TTF1 Antibody; Titration: 1.0 ug/ml; Positive Control: Fetal Liver