

Product datasheet for TA343132

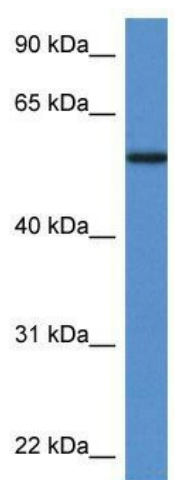
Phosphoglucomutase 5 (PGM5) Rabbit Polyclonal Antibody

Product data:

Product Type:	Primary Antibodies
Applications:	WB
Recommended Dilution:	WB
Reactivity:	Human
Host:	Rabbit
Isotype:	IgG
Clonality:	Polyclonal
Immunogen:	The immunogen for anti-PGM5 antibody: synthetic peptide directed towards the N terminal of human PGM5. Synthetic peptide located within the following region: IPVLTVPYEDQRPAGGGGLRRPTGLFEGQRNYLPNFIQSVLSSIDLR
Formulation:	Liquid. Purified antibody supplied in 1x PBS buffer with 0.09% (w/v) sodium azide and 2% sucrose.
Conjugation:	Unconjugated
Storage:	Store at -20°C as received.
Stability:	Stable for 12 months from date of receipt.
Predicted Protein Size:	56 kDa
Gene Name:	phosphoglucomutase 5
Database Link:	NP_068800 Entrez Gene 5239 Human Q15124
Background:	Phosphoglucomutases (EC 5.2.2.2.), such as PGM5, are phosphotransferases involved in interconversion of glucose-1-phosphate and glucose-6-phosphate. PGM activity is essential in formation of carbohydrates from glucose-6-phosphate and in formation of glucose-6-phosphate from galactose and glycogen.
Synonyms:	PGMRP
Note:	Immunogen Sequence Homology: Human: 100%; Bovine: 100%; Pig: 93%; Rat: 93%; Mouse: 93%; Rabbit: 93%; Guinea pig: 93%
Protein Families:	Druggable Genome


[View online »](#)

Product images:



WB Suggested Anti-PGM5 Antibody; Titration: 1.0 ug/ml; Positive Control: Fetal Heart