

Product datasheet for **TA343130**

TUG (ASPSR1) Rabbit Polyclonal Antibody

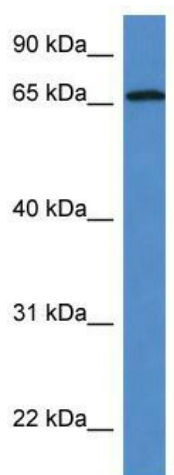
Product data:

Product Type:	Primary Antibodies
Applications:	WB
Recommended Dilution:	WB
Reactivity:	Human
Host:	Rabbit
Isotype:	IgG
Clonality:	Polyclonal
Immunogen:	The immunogen for anti-ASPSR1 antibody: synthetic peptide directed towards the middle region of human ASPSCR1. Synthetic peptide located within the following region: PTRPLTSSSAKLPKSLSSPGGSPKPKKSKSGQDPQQEQEQERERDPQQEQ
Formulation:	Liquid. Purified antibody supplied in 1x PBS buffer with 0.09% (w/v) sodium azide and 2% sucrose. <i>Note that this product is shipped as lyophilized powder to China customers.</i>
Conjugation:	Unconjugated
Storage:	Store at -20°C as received.
Stability:	Stable for 12 months from date of receipt.
Predicted Protein Size:	61 kDa
Gene Name:	ASPSR1, UBX domain containing tether for SLC2A4
Database Link:	NP_076988 Entrez Gene 79058 Human Q9BZE9
Background:	This gene is a candidate gene for alveolar soft part sarcoma (ASPS). It has been found that this gene is fused with transcription factor TFE3 gene in ASPS and also in renal cell carcinomas. Several alternatively spliced transcript variants of this gene have been described, but their full length nature has not been determined.
Synonyms:	ASPCR1; ASPL; ASPS; RCC17; TUG; UBXD9; UBXN9
Note:	Immunogen Sequence Homology: Human: 100%



[View online »](#)

Product images:



WB Suggested Anti-ASPSCR1 Antibody; Titration:
1.0 ug/ml; Positive Control: Fetal Lung