

## Product datasheet for **TA343129**

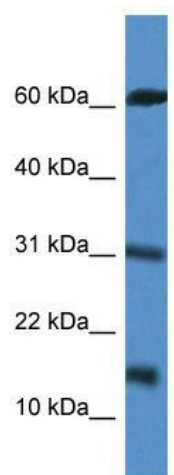
### INCA (CARD17) Rabbit Polyclonal Antibody

#### Product data:

Product Type:	Primary Antibodies
Applications:	WB
Recommended Dilution:	WB
Reactivity:	Human
Host:	Rabbit
Isotype:	IgG
Clonality:	Polyclonal
Immunogen:	The immunogen for anti-CARD17 antibody: synthetic peptide directed towards the middle region of human CARD17. Synthetic peptide located within the following region: MDKARALLDSVIRKGPACQICITYICEEDSHLAGTLGLSAGPTSGNHLT
Formulation:	Liquid. Purified antibody supplied in 1x PBS buffer with 0.09% (w/v) sodium azide and 2% sucrose.
Conjugation:	Unconjugated
Storage:	Store at -20°C as received.
Stability:	Stable for 12 months from date of receipt.
Predicted Protein Size:	12 kDa
Gene Name:	caspase recruitment domain family member 17
Database Link:	<a href="#">NP_001007233</a> <a href="#">Entrez Gene 440068 Human</a> <a href="#">Q5XLA6</a>
Background:	As a regulator of procaspase-1/CASP1 activation, CARD17 is implicated in the regulation of the proteolytic maturation of pro-IL-1beta/IL1B and its release during inflammation. CARD17 inhibits the release of IL1B in response to LPS in monocytes. However, unlike CASP1, CARD17 do not induce NF-kappa-B activation.
Synonyms:	INCA
Note:	Immunogen Sequence Homology: Human: 100%



[View online »](#)

**Product images:**

WB Suggested Anti-CARD17 Antibody; Titration:  
1.0 ug/ml; Positive Control: Jurkat Whole Cell