

## Product datasheet for TA343127

### Keratin 36 (KRT36) Rabbit Polyclonal Antibody

#### Product data:

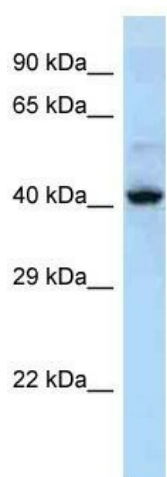
Product Type:	Primary Antibodies
Applications:	WB
Recommended Dilution:	WB
Reactivity:	Human
Host:	Rabbit
Isotype:	IgG
Clonality:	Polyclonal
Immunogen:	The immunogen for anti-KRT36 antibody is: synthetic peptide directed towards the middle region of Human KRT36. Synthetic peptide located within the following region: DINGLRRILDELTLCKADLEAQVESLKEELMCLKKNHEEEVSVLRCQLGD
Formulation:	Liquid. Purified antibody supplied in 1x PBS buffer with 0.09% (w/v) sodium azide and 2% sucrose. <i>Note that this product is shipped as lyophilized powder to China customers.</i>
Purification:	Affinity Purified
Conjugation:	Unconjugated
Storage:	Store at -20°C as received.
Stability:	Stable for 12 months from date of receipt.
Predicted Protein Size:	45 kDa
Gene Name:	keratin 36
Database Link:	<a href="#">NP_003762</a> <a href="#">Entrez Gene 8689 Human</a> <a href="#">O76013</a>
Background:	The protein encoded by this gene is a member of the keratin gene family. This type I hair keratin is an acidic protein which heterodimerizes with type II keratins to form hair and nails. The type I hair keratins are clustered in a region of chromosome 17q12-q21 and have the same direction of transcription.
Synonyms:	HA6; hHa6; KRTHA6



[View online »](#)

**Note:** Immunogen Sequence Homology: Human: 100%; Dog: 93%; Horse: 93%; Bovine: 92%; Pig: 86%; Rat: 86%; Mouse: 86%; Sheep: 86%; Rabbit: 86%; Guinea pig: 86%; Goat: 79%

### Product images:



Host: Rabbit; Target Name: KRT36; Sample Tissue: NCI-H226 Whole cell lysates; Antibody Dilution: 1.0 ug/ml KRT36 is supported by BioGPS gene expression data to be expressed in NCIH226