

Product datasheet for **TA343124**

PFKM Rabbit Polyclonal Antibody

Product data:

Product Type:	Primary Antibodies
Applications:	WB
Recommended Dilution:	WB
Reactivity:	Human
Host:	Rabbit
Isotype:	IgG
Clonality:	Polyclonal
Immunogen:	The immunogen for anti-PFKM antibody: synthetic peptide directed towards the C terminal of human PFKM. Synthetic peptide located within the following region: RALVFQPVAELKDQTD FEH RIPKEQWWL KLR PILKILAKYEIDL DTSD HA
Formulation:	Liquid. Purified antibody supplied in 1x PBS buffer with 0.09% (w/v) sodium azide and 2% sucrose. <i>Note that this product is shipped as lyophilized powder to China customers.</i>
Conjugation:	Unconjugated
Storage:	Store at -20°C as received.
Stability:	Stable for 12 months from date of receipt.
Predicted Protein Size:	85 kDa
Gene Name:	phosphofructokinase, muscle
Database Link:	NP_000280 Entrez Gene 5213 Human P08237
Background:	Three phosphofructokinase isozymes exist in humans: muscle, liver and platelet. These isozymes function as subunits of the mammalian tetramer phosphofructokinase, which catalyzes the phosphorylation of fructose-6-phosphate to fructose-1,6-bisphosphate. Tetramer composition varies depending on tissue type. This gene encodes the muscle-type isozyme. Mutations in this gene have been associated with glycogen storage disease type VII, also known as Tarui disease. Alternatively spliced transcript variants have been described.
Synonyms:	ATP-PFK; GSD7; PFK-1; PFK1; PFKA; PFKX; PPP1R122



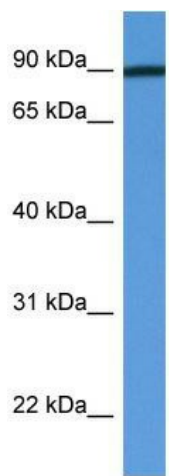
[View online »](#)

Note: Immunogen Sequence Homology: Rat: 100%; Horse: 100%; Human: 100%; Mouse: 100%; Dog: 93%; Pig: 93%; Bovine: 93%; Guinea pig: 93%; Rabbit: 86%; Zebrafish: 86%

Protein Families: Druggable Genome

Protein Pathways: Fructose and mannose metabolism, Galactose metabolism, Glycolysis / Gluconeogenesis, Metabolic pathways, Pentose phosphate pathway

Product images:



WB Suggested Anti-PFKM Antibody; Titration: 1.0 ug/ml; Positive Control: Fetal Heart