

## Product datasheet for **TA343123**

### PR3 (PRTN3) Rabbit Polyclonal Antibody

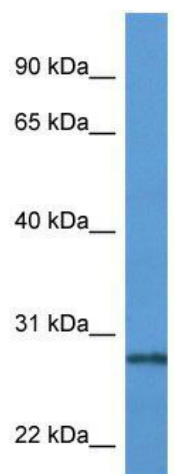
#### Product data:

Product Type:	Primary Antibodies
Applications:	WB
Recommended Dilution:	WB
Reactivity:	Human
Host:	Rabbit
Isotype:	IgG
Clonality:	Polyclonal
Immunogen:	The immunogen for anti-PRTN3 antibody: synthetic peptide directed towards the N terminal of human PRTN3. Synthetic peptide located within the following region: IPQRLVNVVLGAHNVRTQEPTQQHFSVAQVFLNNYDAENKLNVDVLLIQLS
Formulation:	Liquid. Purified antibody supplied in 1x PBS buffer with 0.09% (w/v) sodium azide and 2% sucrose. <i>Note that this product is shipped as lyophilized powder to China customers.</i>
Conjugation:	Unconjugated
Storage:	Store at -20°C as received.
Stability:	Stable for 12 months from date of receipt.
Predicted Protein Size:	28 kDa
Gene Name:	proteinase 3
Database Link:	<a href="#">NP_002768</a> <a href="#">Entrez Gene 5657 Human P24158</a>
Background:	PRTN3 is a polymorphonuclear leukocyte serine protease that degrades elastin, fibronectin, laminin, vitronectin, and collagen types I, III, and IV (in vitro) and causes emphysema when administered by tracheal insufflation to hamsters.
Synonyms:	ACPA; AGP7; C-ANCA; CANCA; MBN; MBT; NP-4; NP4; P29; PR-3; PR3
Note:	Immunogen Sequence Homology: Human: 100%
Protein Families:	Druggable Genome, Protease



[View online »](#)

## Product images:



WB Suggested Anti-PRTN3 Antibody; Titration: 1.0 ug/ml; Positive Control: Fetal Lung